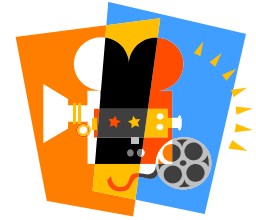


CITY OF ORANGE FILMING FEES



APPLICATION FEES

Motion Picture/Television/Commercial/Still	\$40.00
Student/Non-Profit Organization Films	0.00
Private Property <i>Filming must be contained entirely on private property</i>	0.00

PERMIT FEES

Citywide Public Property	
Motion/Still	\$208.00/day
Plaza District*	
Motion	\$444.00/day
Still	\$208.00/day
Parks	
Motion / Still	\$218.00/day
Preparation and Strike Days	50% of the daily use rate
Private Property	
Filming must be contained entirely on private property	\$0.00
Student or Non-profit Productions	\$0.00

CITY EXPENSES

City Staff**	
Film Liaison (regular time)	Actual Cost
Police (overtime)	Actual Cost
Police (regular time)	Actual Cost
Fire (regular time, fire prevention)	Actual Cost
Other City Staff (regular time)	Actual Cost
Other Expenses	Reimbursed at 100% of cost

* For purposes of film production, the Plaza District generally encompasses the Plaza, north to Maple Avenue, east to Grand Street, south to Almond Avenue and west to Lemon Street.

** Application and permit fees include up to two (2) hours of staff time, i.e., permit processing, fee collection, notification and coordination with other City departments, etc. All additional time is charged at the hourly rate.