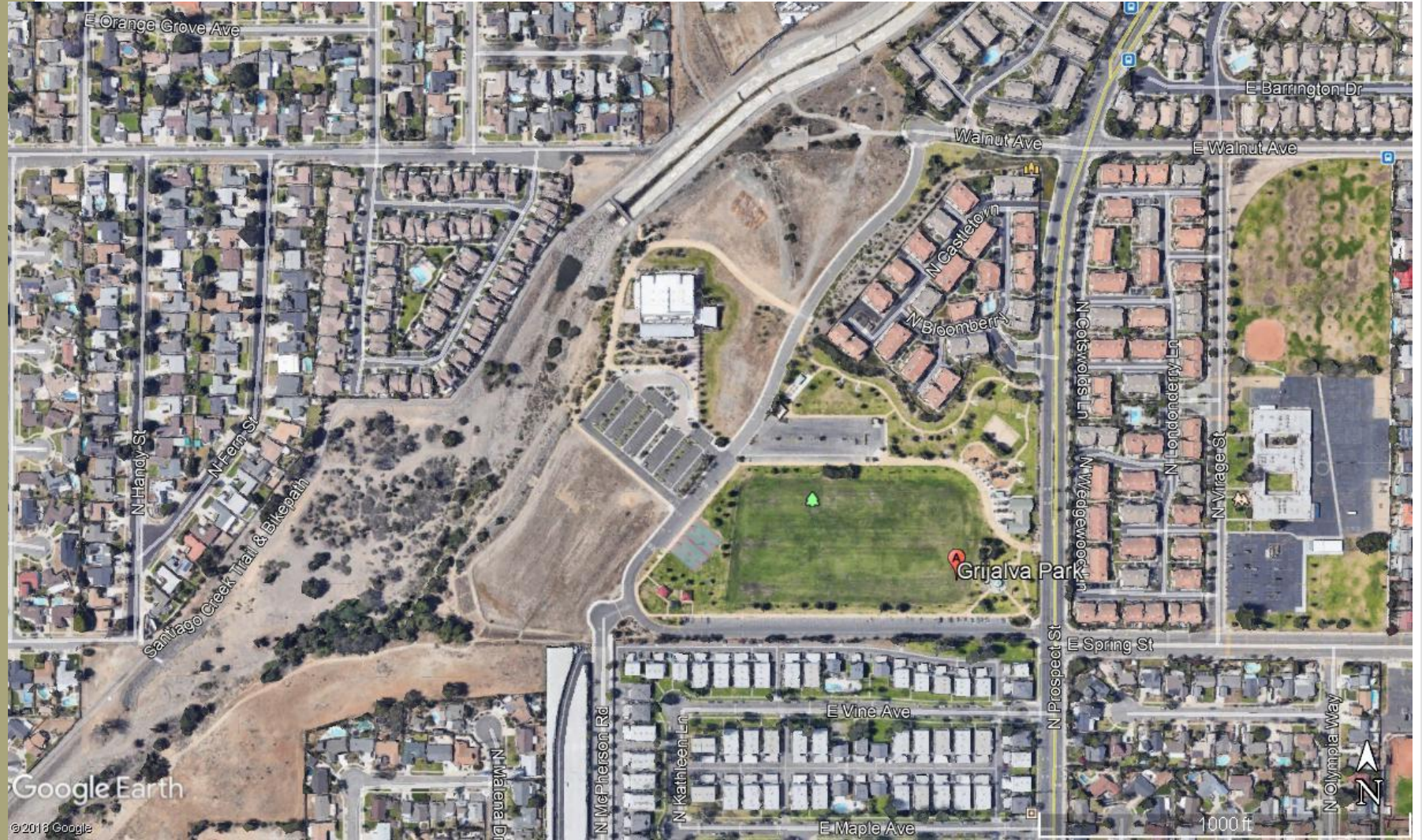


# Grijalva Park at Santiago Creek

Masterplan Review  
February 12, 2019

# Aerial Map 2018



# Grijalva 2005 Site Plan



CITY OF ORANGE  
GRIJALVA PARK AT SANTIAGO CREEK

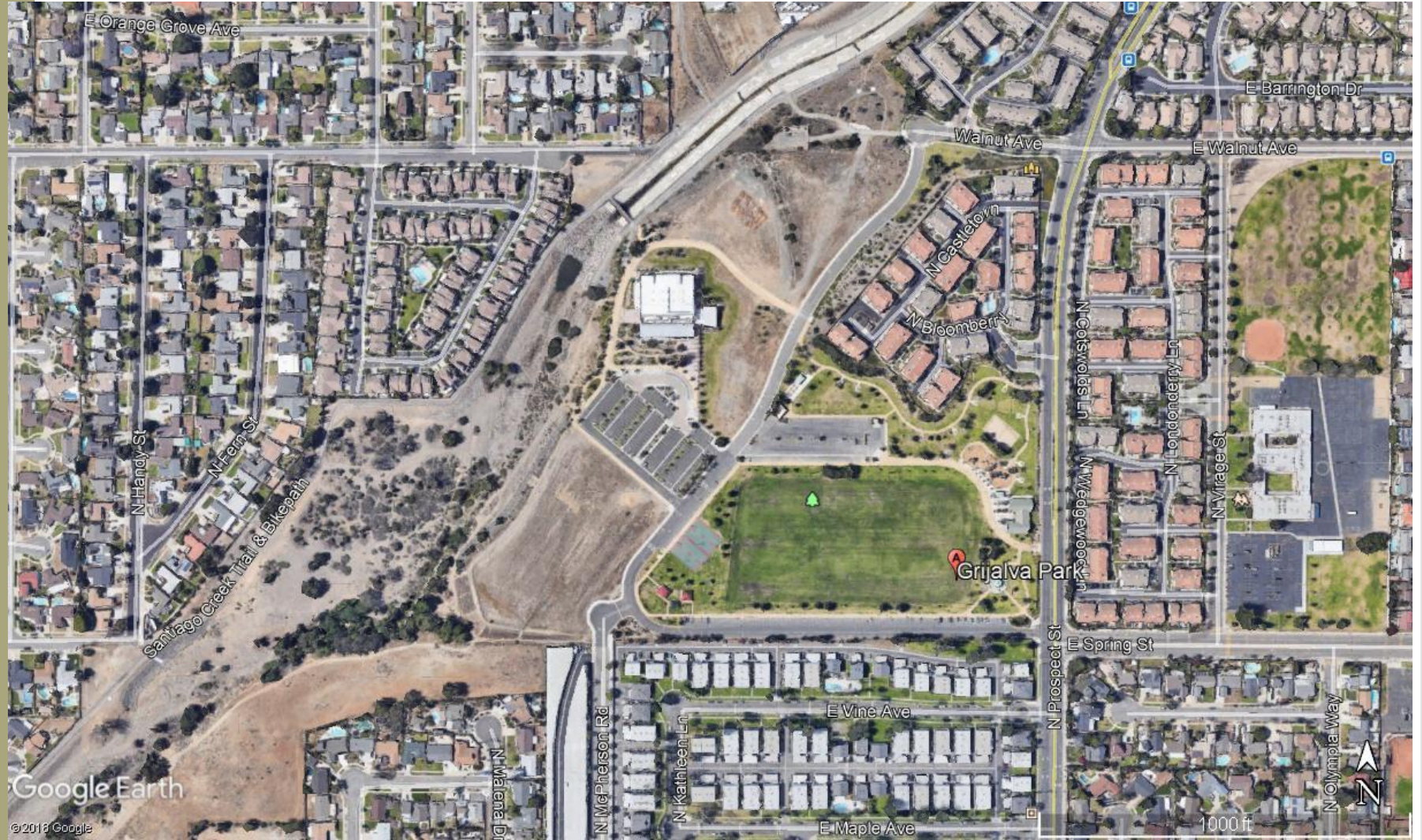
SITE PLAN

08/05/05



**purkiss-rose-rsi**  
Landscape Architecture  
Interior and Park Planning  
4400 South Street  
Orange, California  
714.941.1111  
www.purkiss-rose-rsi.com

# Aerial Map 2018



## Community Requests

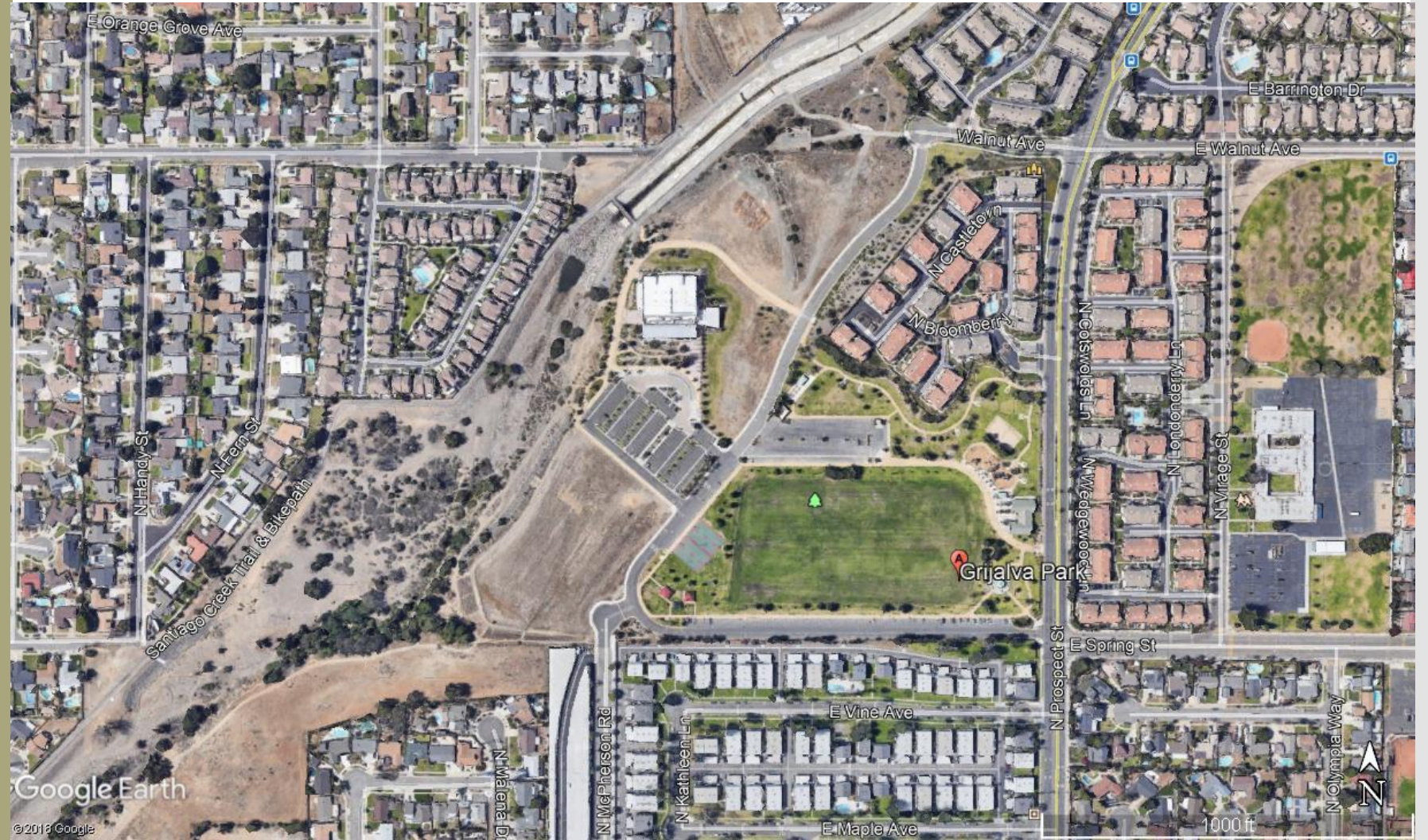
- August 2018 – Skate Park
- October 2018 – Arts Theater
- November 2018 – Community Aquatics Facility
- February 2019 – Library
- Community discussion for potential need for an east end Senior Center

# Community Requests

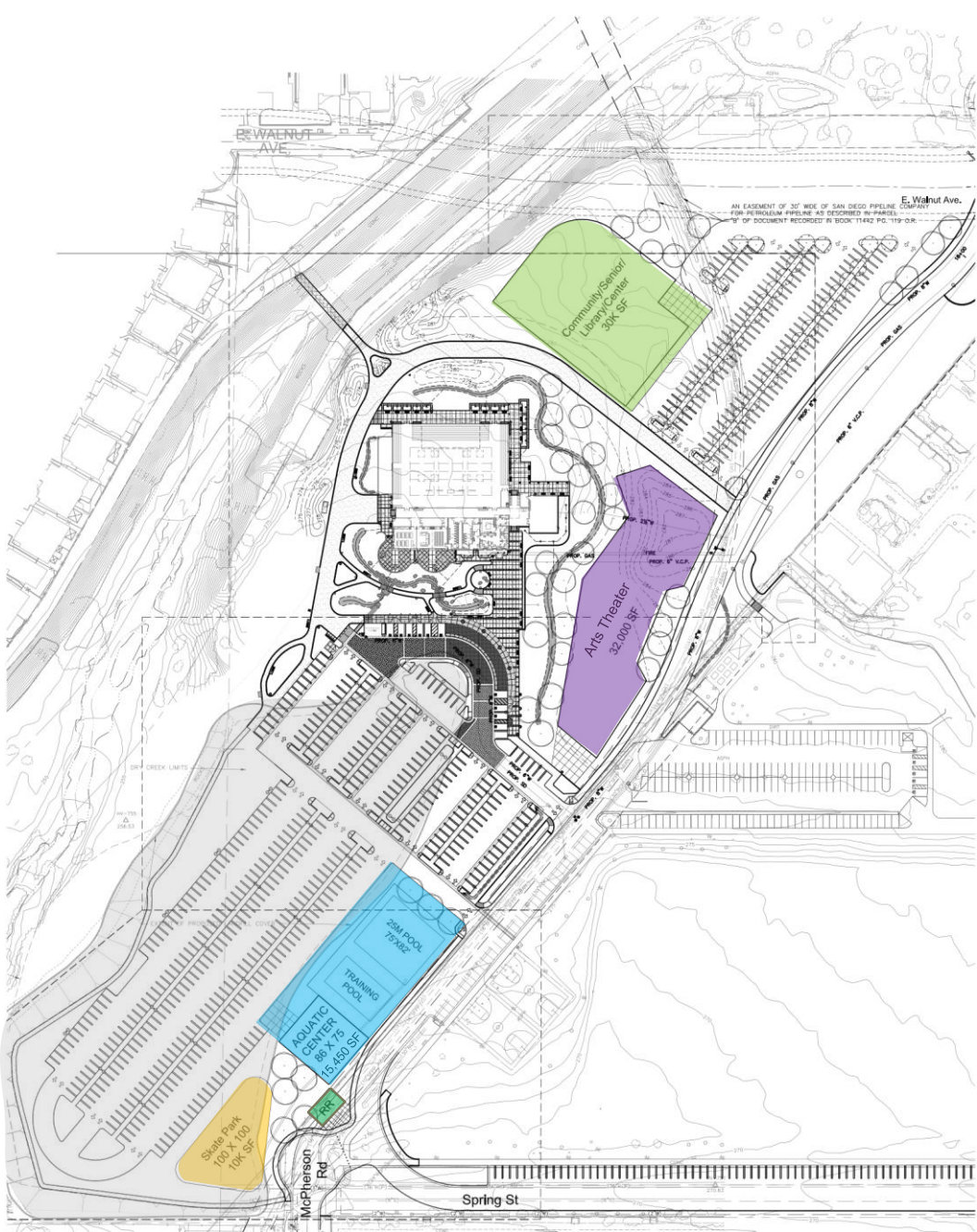
Arts theater	40,000 - 55,000 sq. ft.	590 seat theater
Aquatics facility	18,720 sq. ft.	25 Meter pool, plus instructional pool
Branch Library	15,000 - 25,000 sq. ft.	El Modena Branch is approx. 17,000 sq. ft.
Community / Senior Center	10,800 sq. ft.	Identified in the 2005 masterplan
Skate Park	10,000 sq. ft.	Identified in the 2005 masterplan

## Site conditions to consider:

- Former Union Pacific Railroad landfill
- Kinder Morgan Pipeline
- Residential housing
- Adequate parking and circulation
- Existing programming



# Draft Grijalva Park Updated Masterplan





# 2005 Site Plan



# Draft Updated Masterplan

