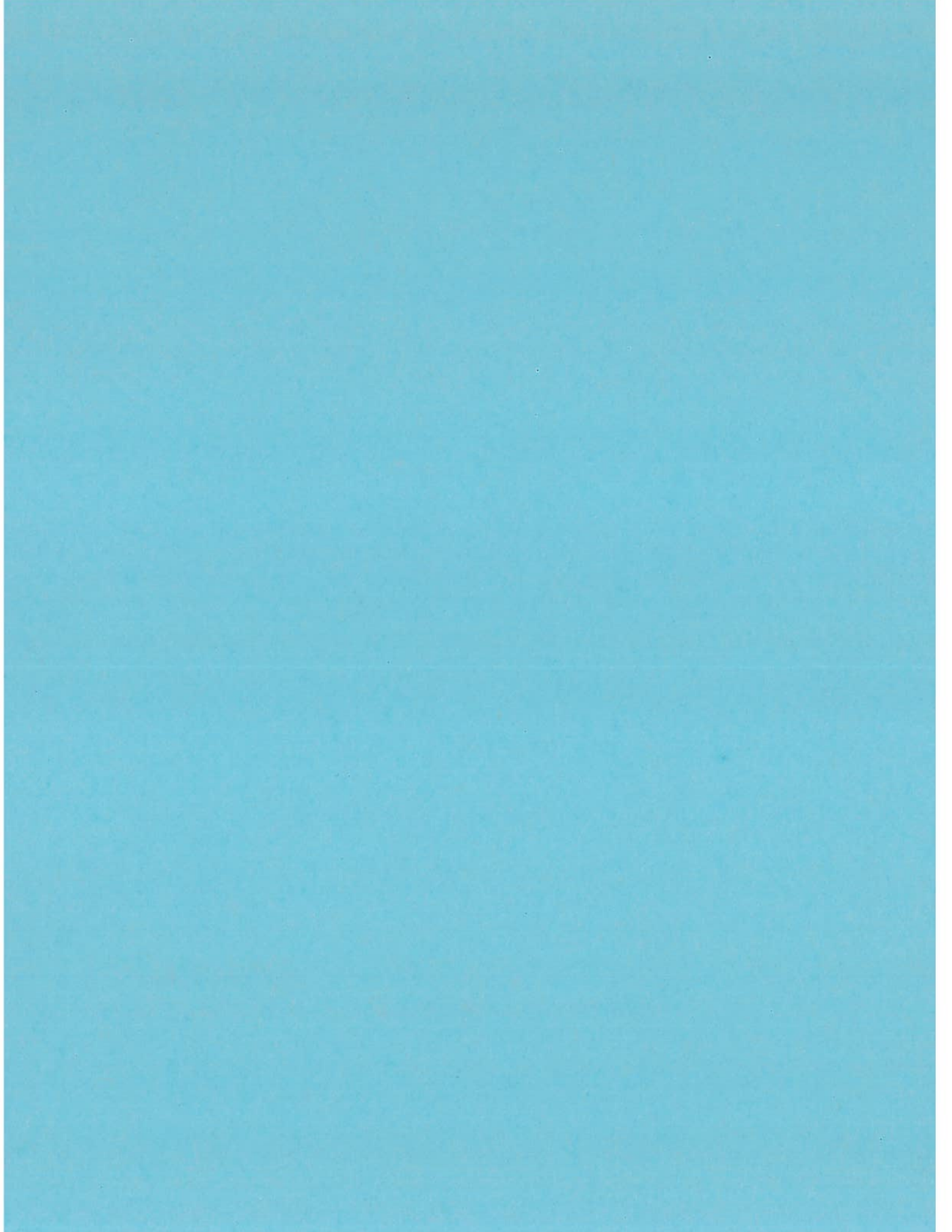


Appendix I

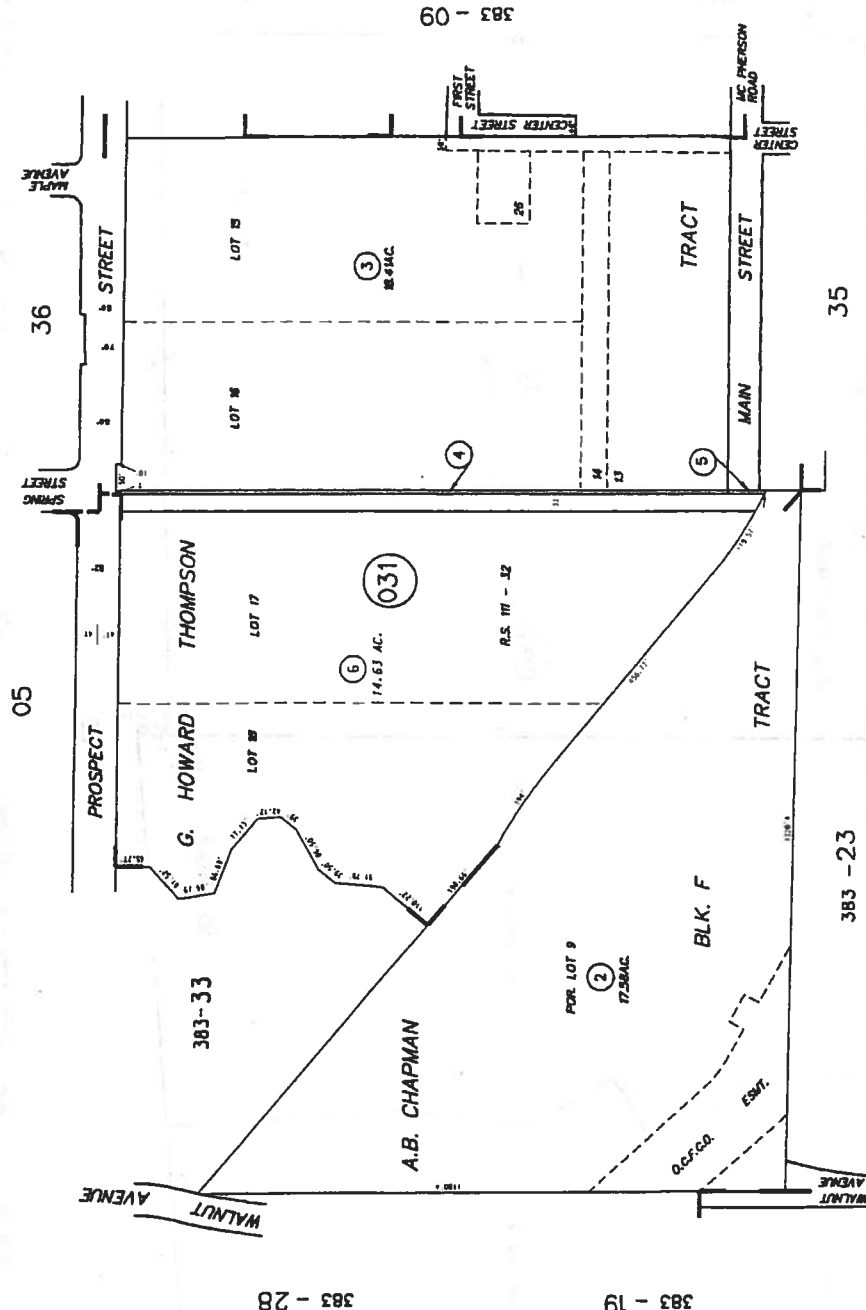
Assessors Parcel Maps, General Plan Designations, and Zoning Designations



THIS MAP WAS PREPARED FOR ORANGE COUNTY ASSESSOR DEPT. PLANNING DIV. THE ASSESSOR MAKES NO GUARANTEE AS TO ITS ACCURACY NOR ASSUMES ANY LIABILITY FOR OTHER USES. ALL RIGHTS RESERVED. COPYRIGHT ORANGE COUNTY ASSESSOR 2002

093-03

1" = 200'



PRIVATE STREET

MARCH 1951

G. HOWARD THOMPSON TRACT
A.B. CHAPMAN TRACT (see also roll map)
TRACT NO. 13841 (street only)

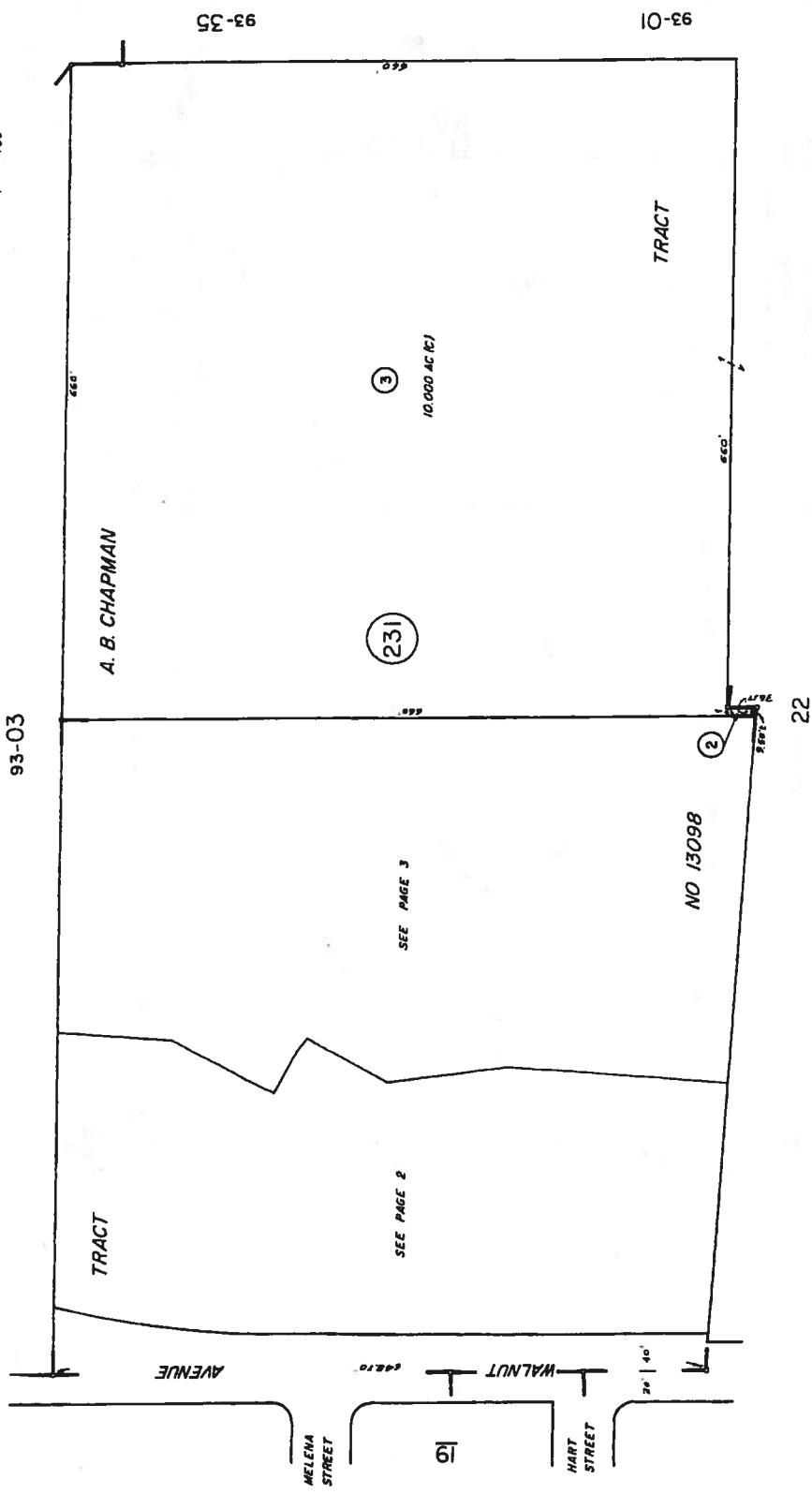
R.S. 1-22
M.M. 102-15
M.M. 674-23 to 27 inc.

NOTE - ASSESSOR'S BLOCK & PARCEL NUMBERS SHOWN IN CIRCLES

ASSESSOR'S MAP
BOOK 093 PAGE 03
COUNTY OF ORANGE



THIS MAP WAS PREPARED FOR ORANGE COUNTY ASSESSOR DEPT. PURPOSES ONLY. THE ASSESSOR MAKES NO GUARANTEE AS TO THE ACCURACY OF THE INFORMATION SHOWN HEREON. ALL RIGHTS RESERVED. © COPYRIGHT ORANGE COUNTY ASSESSOR 2002



MARCH 1987

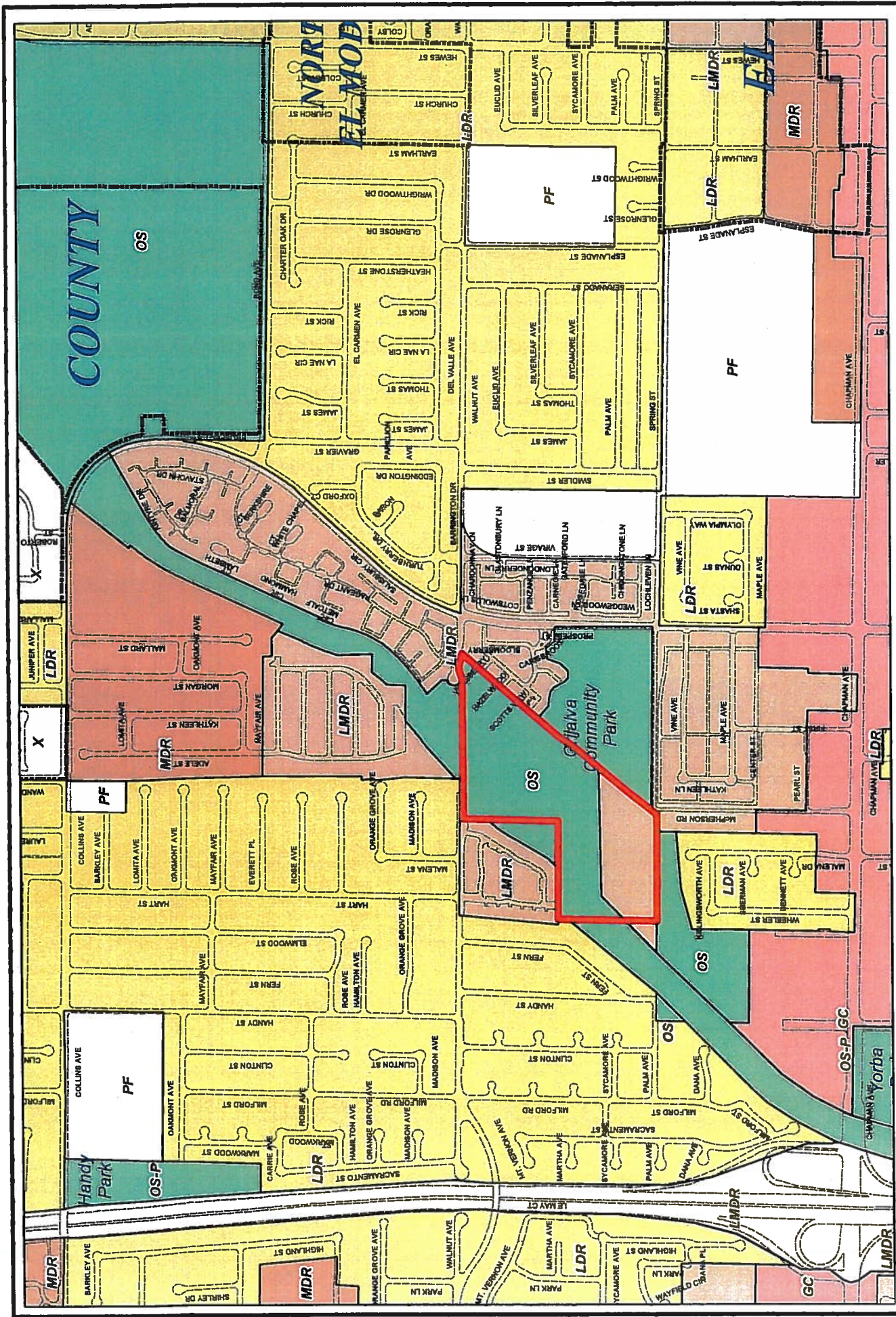
A.B. CHAPMAN TRACT
TRACT NO. 13098

M.M. 102-15 (see also roll map)
M.M. 623-14, 15, 16

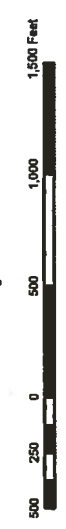
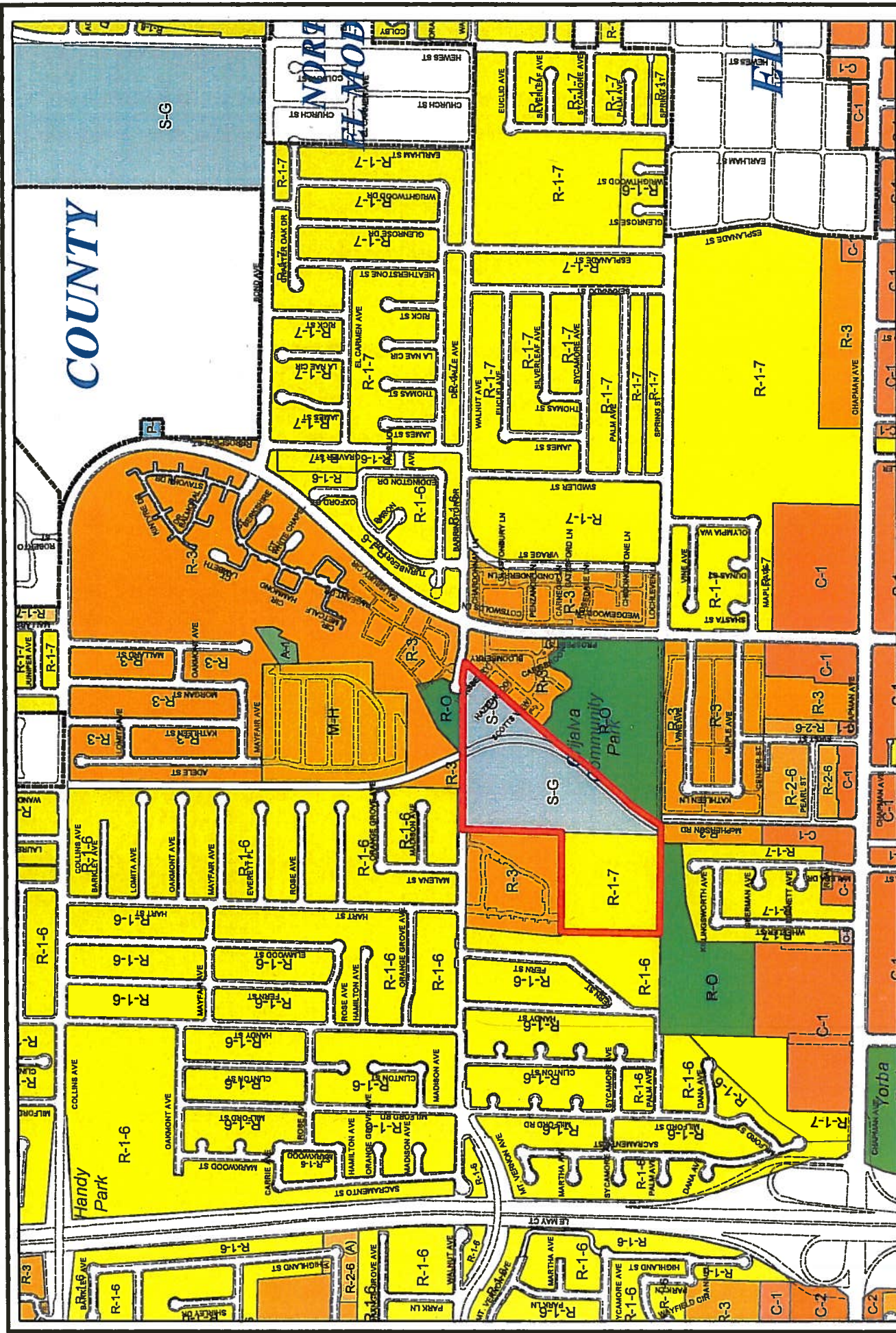
NOTE - ASSESSOR'S BLOCK & PARCEL NUMBERS SHOWN IN CIRCLES



ASSESSOR'S MAP
BOOK 383 PAGE 23
COUNTY OF ORANGE



GENERAL PLAN MAP



ZONING MAP