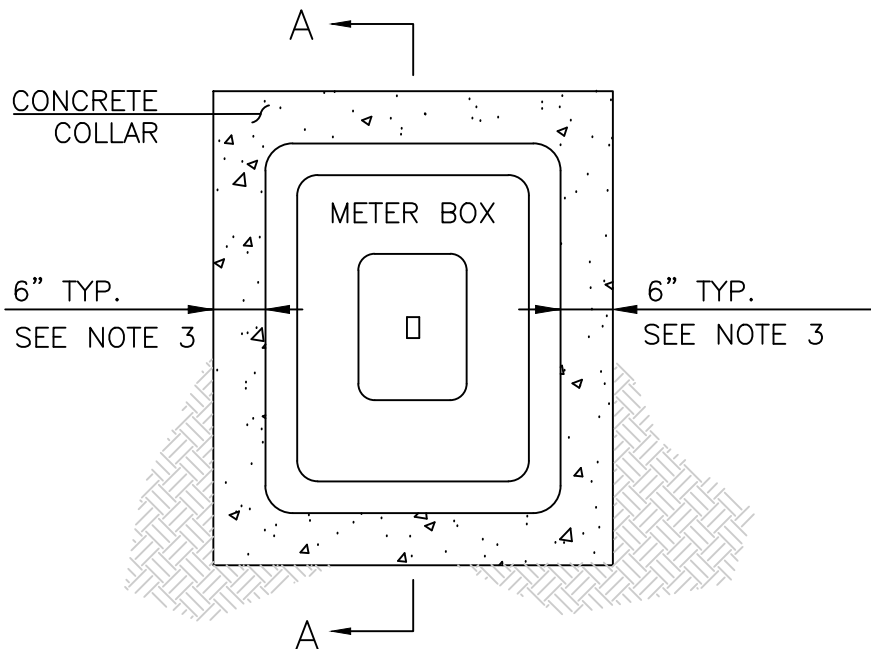


SECTION A - A



NOTES:

1. METER BOX WILL BE RAISED TO THE SAME ELEVATION AS THE TOP OF THE CURB BY THE DEVELOPER.
2. THE CONCRETE SHALL BE CLASS 520-C-2500 CONTAINING NOT LESS THAN FIVE SACKS PER CUBIC YARD.
3. THE WIDTH OF CONCRETE COLLAR WILL BE REDUCED TO 2" FOR 3" AND 4" SERVICE WITH MULTIPLE METERS, INSTALL METER BOXES 2" APART.

David Dief 1/31/2023
CITY WATER MANAGER

James B. 1/31/2023
CITY ENGINEER

Chad A. 1/31/2023
PUBLIC WORKS DIRECTOR

CITY OF ORANGE WATER DIVISION STANDARDS

METER BOX INSTALLATION IN LANDSCAPED AREA

OWD STD. DWG.

OWD-212

SHEET 1 OF 1