



CITY OF ORANGE

COMMUNITY SERVICES DEPARTMENT www.cityoforange.org PHONE: (714) 744-7274 • FAX: (714) 744-7251

ADDENDUM #1 **FOR** **Request for Bid (RFB)** **Bid No. 22-23.28**

El Camino Real Park Booster Pump Installation

February 9, 2023

This addendum serves as written notice of the following corrections, clarifications, additions and/or deletions to any and all copies of the Request for Bid (Bid No. 22-23.28).

NOTICE FOR ADDITIONAL INFORMATION REGARDING:

EXHIBIT A.
[Beneath this sheet.]



Watertronics
P.O. Box 530
Hartland, WI 53029
262-367-5000 PH
262-367-5551 FX

WATERMAX 5000 SERIES PROPOSAL

Booster Variable Speed Pumping System

U. L. Approved Package Pumping System Suitable for Three Phase Power

Customer:		Date:	August 18, 2022
Attn:		Quotation #:	
Phone #:		Project Name:	El Camino Park
Fax #:		Location:	Orange, CA
Email:		Quoted By:	Steven Kim (760.214.5734)
Cc:		Sales Email:	steven.kim@gentileandassociates.com

STATION PERFORMANCE: 152 GPM @ 45 PSI boost Dynamic Inlet Pressure = 60 PSI

POWER REQUIREMENT: Power shall be 480 volt, 3 phase, 60 hertz.

Note: See Power Supply in the Terms and Conditions Section below for further information.

MODEL DESCRIPTION: WMBV-5000-7A-7.5-480-3-152-105

Project Scope: Prefabricated, self-contained, Variable speed, (VFD), **7.5 HP** horizontal centrifugal pump station with piping, valves, and enclosure. Controls will be an operator interface with software programming written specifically for this project. A formed and reinforced base platform and enclosure with lockable lid contains all manifolding, pumps, motors and control panels (disconnect mounted externally) to provide an integral unit ready for easy installation, anchored to a concrete pad.

Note!! This Proposal was formulated to meet the customer supplied design specifications. Watertronics is not responsible for meeting any specifications that were not presented prior to submitting this proposal.

STANDARD CONTROLS & EQUIPMENT INCLUDE:

- External mounted NEMA 3R main disconnect panel
- U.L listed control panel
- 3.5" backlit LED color touch screen operator interface display featuring:
 - Flow readout
 - Pressure readout
 - Flow totalizer
 - Elapsed run time display
- Alarm conditions with safety shutdown:
 - Low discharge pressure shutdown
 - High discharge pressure shutdown
 - VFD fault shutdown
 - High pump temperature shutdown
- Overload, single phase, phase imbalance/low voltage protection
- Surge protection for main station and solid state controls
- Variable Frequency Drive pressure regulation
- Pressure drop start
- Stainless steel pressure transducer
- Data Industrial 220B flow sensor mounted inside enclosure
- 1 ea. **7.5 HP**, 3600 RPM horizontal centrifugal pump and EISA compliant ODP motor. Pump to be cast

- iron with a bronze impeller and mechanical seal.
- Silicone filled pressure gauges with isolation valve on suction and discharge piping
- Station discharge isolation valve
- Full flow by-pass piping with QTY (3) isolation valves inside station enclosure
- Forced fan air cooled **marine grade aluminum** ventilated pump station and base, **un-painted**, with lockable access cover
- **Optocoupler to share flow sensor signal**
- **Dead front external disconnect panel**
- **3" FL x 6" FL fabricated steel discharge drop pipe with swivel connection, 1" min dia. blowout port**
- **3" FL x 6" FL fabricated steel inlet drop pipe with swivel connection**
- Baked and cured two part polyurethane ultraviolet insensitive paint
- Factory certified dynamic run testing of pump station up to full flow and pressure prior to shipment
- One operator and maintenance manual
- Two year limited warranty on mechanical and electrical components
- Access to Watertronics customer service technical phone support, technicians on call 24/7
- Access to Watertronics factory authorized service technician

PUMP STATION PRICE (INCLUDES ALL ABOVE):	U.S. Dollars	To Quote
Adders not included in above base price:		
Local Set-Up by Watertronics.....		Not Included
• Includes one trip to site, one day on site by PSN provider or WT technician		
Local Start-Up by Watertronics.....		Included
• Includes one trip to site, one day on site by PSN provider or WT technician		
• Site must be fully ready to avoid additional trips and further charges		
Crane To Off-Load and Set Pump Station.....		Not Included
Sales Tax.....		Not Included
Domestic US - Packaging & Freight from Factory to Job Site: FOB Factory.....		Included

Shipment: Estimated 18-20 weeks after receipt of signed contract and drawing approval. A firm delivery date will be established and transmitted within 5 days of receipt of all final details and documents.

Terms and Conditions

DELIVERY AND SET-UP:

1. All reasonable efforts will be made to meet the requested delivery date after the receipt of a signed contract however; Watertronics will not be liable for delays in delivery.
2. Pump station components shipped separately from the station, at the Customer's request, may incur additional freight charges, payable by the Customer.
3. Customer will be responsible for having job site readily accessible for station delivery.
4. Customer will provide the equipment and personnel required to unload and/or set the pump station.
5. Station Set-up charges – if required and if more than one trip and day is required, additional charges of \$750.00 per day will be assessed if the customer caused the delay.
6. Customer will be responsible for electrical permit if required.

7. Customer will be responsible for primary electrical hookup to pump station.
8. Customer will be responsible for making all piping connections.
9. Customer will be responsible for building modifications if required for installation.
10. Customer will be responsible for wet well, slab, or concrete work.
11. Customer will be responsible for piping any filter flush line back to supply lake

START-UP:

1. Start-up charges – if required and if more than one trip and day is required, additional charges of \$750.00 per day will be assessed if the customer caused the delay.
2. Purchaser will notify Watertronics two weeks in advance of the desired start-up date.

WARRANTY:

1. Watertronics warrants its pump station products to be free of defects in materials and workmanship for a period of two (2) years from the date of startup, but not later than 27 (27) months from the date of invoice, unless modified by customer with the selection of the extended warranty option. Stations deemed delivery complete and invoiced accordingly, at Watertronics' factory and stored there, shall have the warranty period commence as of the invoice date. Should the system require storage before startup after leaving the Watertronics' facility, the system must be stored in a secured, climate controlled environment that will not allow for degradation of the system due to moisture, extreme temperature variations, or human negligence.
2. This warranty is limited to replacing or repairing any defective component supplied by Watertronics at Watertronics' sole discretion and does not apply to equipment that has been damaged, misapplied or has been modified in any way.
3. Any work performed on the pump station must be provided by a Watertronics recognized PSN (Pump Service Network) service provider and documentation of all work performed within the warranty period must be on file at the factory. Any maintenance or repairs done without the pre-authorization of Watertronics, or its recognized service providers shall void this warranty.
4. This warranty does not cover damages under the following conditions, unless otherwise specified in writing: (1) Misapplied or inappropriate incoming power, improper grounding, vandalism, or any incidental damage, consequential damage, or act of God, (2) repairs or replacements made without the pre-authorization of Watertronics, or its recognized service providers, (3) exposure to destructive gaseous or chemical solutions, (4) exposure to water pH levels of less than 6.0 which is typically the result of SO₂ burner or sulfuric acid injection, (5) water salinity levels greater than 2000 parts per million, (6) water from a reverse osmosis process plant, (7) unusually high dirt load or abrasives in the water, or (8) pumping water not suitable for turf irrigation.
5. Watertronics will not accept liability for any costs associated with the removal or replacement of equipment in difficult to access locations. This includes, but is not limited to, the use of cranes larger than 15 tons, scuba divers, barges, helicopters, or other unusual means. These extraordinary costs shall be borne by the owner, regardless of the reason necessitating removal of the product from service.
6. THIS WARRANTY IS ABSOLUTELY IN LIEU OF ANY OTHER EXPRESS OR IMPLIED WARRANTIES. THIS INCLUDES ANY IMPLIED WARRANTY OF MERCHANTABILITY OR FITNESS FOR A PARTICULAR PURPOSE, AND OF ANY OTHER OBLIGATION ON THE PART OF WATERTRONICS.

NO AGENT, EMPLOYEE OR REPRESENTATIVE OF WATERTRONICS HAS ANY AUTHORITY TO BIND WATERTRONICS TO AN AFFIRMATION, REPRESENTATION OR WARRANTY CONCERNING THE PRODUCT SOLD UNDER THIS WARRANTY. THERE ARE NO WARRANTIES WHICH EXTEND BEYOND THE DESCRIPTION ON THE FACE HEREOF.

Proper Storage: Should the system require storage before start up, it must be stored in a secured climate controlled environment that will not allow for degradation of the system due to moisture, extreme temperature variations, or human negligence.

POWER SUPPLY:

1. **The pump station proposed herein is designed for 480 volt, WYE configured or closed delta balanced 3 phase power. The acceptable range of voltage is 455 volts (min) – 495 volts (max). Unless specifically stated under Optional Equipment, open delta, phase converters, or other forms of unbalanced three phase power are not acceptable.**
2. If the supply voltage is not within this acceptable range, the purchaser is responsible for making the necessary corrections. This may include re-tapping or replacing the primary transformer. If the supply voltage is outside the stated range, electrical components such as VFD's, fuses, breakers, overloads, motors, power supplies may intermittently trip or prematurely fail and will not be considered for warranty coverage.
3. The use of generator power is not recommended. If a generator is required as a temporary power supply, the pump station will be covered under Watertronics' limited warranty provided that their "Engine Driven Generator Power Warranty Policy and Operation Guidelines" document is strictly adhered to.
4. Proper electrical grounding of the pump station is a requirement. Station will not operate properly and could pose a health hazard if not properly grounded. Failures of any magnitude due to improper grounding will not be covered under warranty.

PAYMENT TERMS: U.S. Dollars Only

1. All purchase orders are subject to acceptance at factory in Hartland, Wisconsin. Receipt of production deposit, verification of acceptable credit and confirmation of order are required before production. 25% production deposit required to initiate order. Balance due net 30 days from date of invoice (shipment of product). Late fee of 1.5% of the unpaid balance will be charged per month on all accounts past due.
2. In the event the customer cannot take delivery on the requested date, delivery shall be deemed completed at the pump station manufacturing facility for the purpose of payment and eighty (80) percent of the contract price will be due immediately, not to exceed ten (10) days. In addition, the customer will be responsible for additional storage and handling charges incurred with a minimum charge of \$750 to be added to the invoice.

OTHER INFORMATION:

1. Prices valid for sixty (60) days from the date of this proposal.
2. State and local sales taxes are not included in these prices.
3. Seller retains a security interest in the above mentioned equipment as provided by the UNIFORM COMMERCIAL CODE, until payment is received in full.
4. All claims for incorrect deliveries must be submitted in writing to Watertronics Customer Service within 15 days after receipt of goods.
5. All claims for price discrepancy must be submitted in writing to Watertronics Customer Service within 60 days after receipt of goods.
6. A completed pump station may not be returned to Watertronics for credit.

PUMP STATION SPECIFICATIONS:

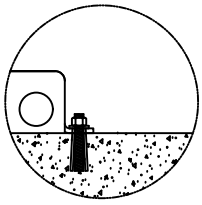
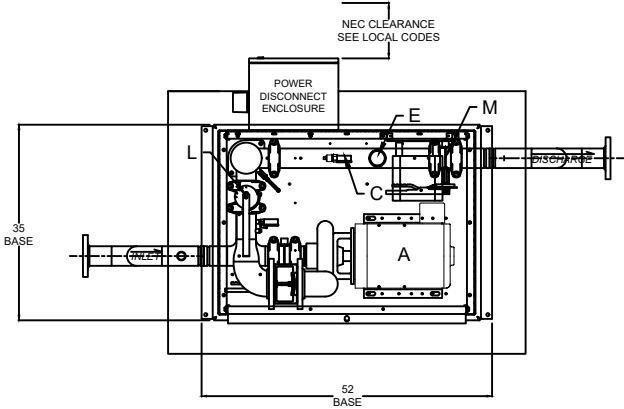
NAME: EL CAMINO PARK
 STATION MODEL: WMBV-5000-7A-7.5-480-3-152-105
 STATION TOTAL PERFORMANCE: 152 GPM @ 105 PSI
 DYNAMIC INLET PRESSURE: 60 PSI
 BOOST PRESSURE: 45 PSI
 REGULATED DISCHARGE PRESSURE: 105 PSI
 PUMP HORSEPOWER:
 PUMP NO.1: 7.5HP (3600RPM)
 CHECK VALVE SIZES:
 PUMP NO.1 3"
 ISOLATION VALVE SIZES:
 DISCHARGE ISOLATION VALVE SIZE: 3"
 DISCHARGE MANIFOLD SIZE: 3"

POWER REQUIREMENTS: 480V, 60HZ, 3PHZ, 11 FLA (EST.)
 EXHAUST FAN REQUIREMENTS: 240CFM

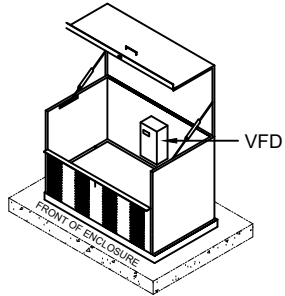
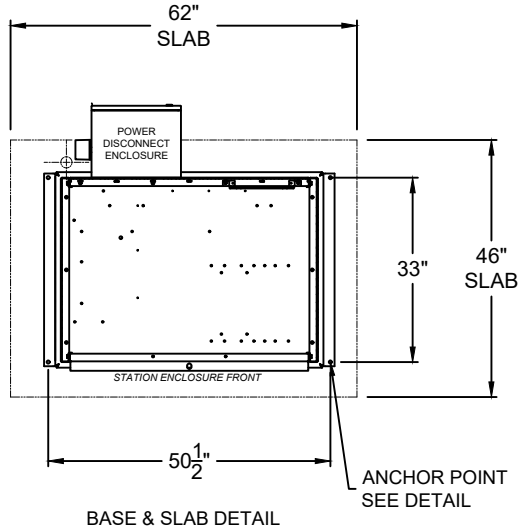
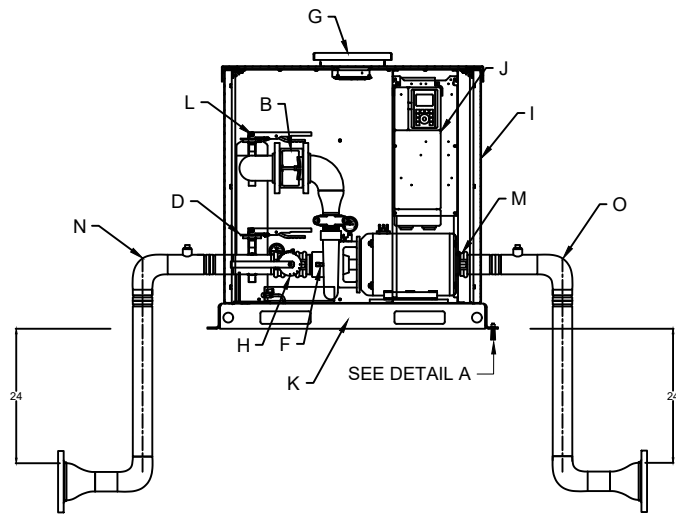
STATION COMPONENTS:

- A PUMP AND MOTOR
- B CHECK VALVE
- C PRESSURE TRANSDUCER WITH GAUGE
- D BYPASS VALVE
- E FLOW SENSOR
- F TEMP SENSOR
- G STATION FAN HOOD MOUNTED
- H PUMP INTAKE ISOLATION VALVE
- I MARINE GRADE ALUMINUM ENCLOSURE (UNPAINTED)
- J VFD WITH PUMP CONTROLLER
- K MARINE GRADE ALUMINUM BASE (UNPAINTED)
- L PUMP DISCHARGE ISOLATION VALVE
- M STATION DISCHARGE ISOLATION VALVE
- N INTAKE DROP PIPE W/ 6" FLG CONNECTION
- O DISCHARGE DROP PIPE W/ 6" FLG CONNECTION

NOT SHOWN: OPTOCOUPLER FOR FLOW SENSOR SIGNAL



DETAIL "A"
 CONCRETE ANCHOR
 TYPICAL (4) LOCATIONS



ENCLOSURE
 ISOMETRIC VIEW

<input type="checkbox"/> APPROVED AS SUBMITTED	7			
<input type="checkbox"/> APPROVED AS NOTED	6			
<input type="checkbox"/> REVISE AND RESUBMIT	5			
SIGNATURE: _____	4			
NAME: _____	3			
DATE: _____	2			
	1			
	NO.	DATE	BY	DESCRIPTION

7				
6				
5				
4				
3				
2				
1				
NO.	DATE	BY	DESCRIPTION	

DRAWN BY: IPB DATE: 08/19/22
 CHECKED BY: DATE: _____
 THIS DRAWING AND DESIGN, IS THE PROPERTY OF WATERTRONICS AND IS NOT TO BE REPRODUCED IN WHOLE OR PART, NOR EMPLOYED FOR ANY PURPOSE OTHER THAN SPECIFICALLY PERMITTED IN WRITING BY WATERTRONICS.
 THIS DRAWING LOANED AND SUBJECT TO RETURN ON DEMAND

TITLE: EL CAMINO PARK
 WMBV-5000-7A-7.5-480-3-152-105

SCALE: NTS SHEET 1 OF 1 SHEETS
 JOB NO.: DRAWING NO. PRST14821

Please Note: The bid submission deadline remains Thursday, March 9, 2023 at 2:00 p.m.

Respectfully Submitted,

**Ashlie Valencia
City of Orange
Administrative Assistant
avalencia@cityoforange.org
714-744-5598**