



CITY OF ORANGE

PUBLIC WORKS DEPARTMENT

www.cityoforange.org

ENGINEERING DIVISION
(714) 744-5544
FAX: (714) 744-5573

MAINTENANCE DIVISION
(714) 532-6480
FAX: (714) 532-6444

TRAFFIC DIVISION
(714) 744-5540
FAX: (714) 744-5573

WATER DIVISION
(714) 288-2475
FAX: (714) 744-2973

Addendum No. 2

Date: January 24, 2024

To: All Bidders

Subject: **Bid No. 23-24.26**; SP-4264; CDBG Grand Street Neighborhood Street Rehabilitation Project

The following updates and revisions are made to the project referenced above.

Plans

1. The project plans have been revised to include various corrections. All prospective bidders shall take note of changes made in red on the plans.

Attachment 5 Federal Special Provisions:

1. Attachment 5 has been updated to include the latest HUD-4010 Federal Labor Standards Provisions and new page numbers. The attached Attachment 5 Federal Special Provisions shall replace the previous Attachment 5.

Title Sheet:

1. The title sheet was updated to show the correct page numbers for the revised Attachment 5.

Bid Proposal Schedule:

1. The proposal schedule was updated to reflect changes in quantities for the project.

Bidder shall signify the receipt of this addendum with signature on page **P-5** of the project's bid proposal. Please contact Martin Varona for any questions regarding this Addendum #2 by 2:00 PM January 31, 2024 at mvarona@cityoforange.org or call at (714) 744-5563.

Martin Varona, P.E.
Associate Civil Engineer
Public Works – Engineering

Cc: Randy Nguyen

BID PROPOSAL FOR CDBG FY 2023-24 GRAND STREET NEIGHBORHOOD STREET REHABILITATION

BID NO. 23-24.26
eBidDoc™ 8877415

PROJECT: SP-4264

BIDS DUE: 2:00 PM, Thursday, February 1, 2024
PLACE: City Clerk's Office, City of Orange, 300 E. Chapman Avenue
TIME OF COMPLETION: Thirty (30) Calendar Days
PLANS & SPECS AVAILABLE AT: Public Works Dept., 300 E. Chapman Avenue
www.QUESTCDN.com; Email: info@questcdn.com
COST: \$25.00 (\$35.00, if mailed)
BID INQUIRIES: (714) 744-5527

CITY OF ORANGE DEPARTMENT OF PUBLIC WORKS



INDEX

1. NOTICE INVITING BIDS (Legal Notice).....	LN-1	
2. PROPOSAL	P-1 TO P-28	
3. ATTACHMENT 1: Compliance Documents	CD-1 TO CD-16	
4. ATTACHMENT 2: Labor Relations Forms.....	LR-1 TO LR-25	
5. ATTACHMENT 3: Project Special Provisions.....	SP-1 TO SP-62	
6. ATTACHMENT 4: City Standard Plans (Partial Set) and Material Specifications		
7. ATTACHMENT 5: Federal Provisions and Requirements	FP-1 TO FP-21 FP-26	ADD-2
8. ATTACHMENT 6: Federal Prevailing Wage Rates		
9. APPENDIX A: Performance Bond, Payment Bond and Sample Contract		
10. APPENDIX B: Construction Plans		
11. APPENDIX C: Build America, Buy America (BABA) Requirements		ADD-1

January 2024

Prepared By:

 Martin Varona, Associate Civil Engineer

1/8/2024

 Date

Approved By:

01/11/2024

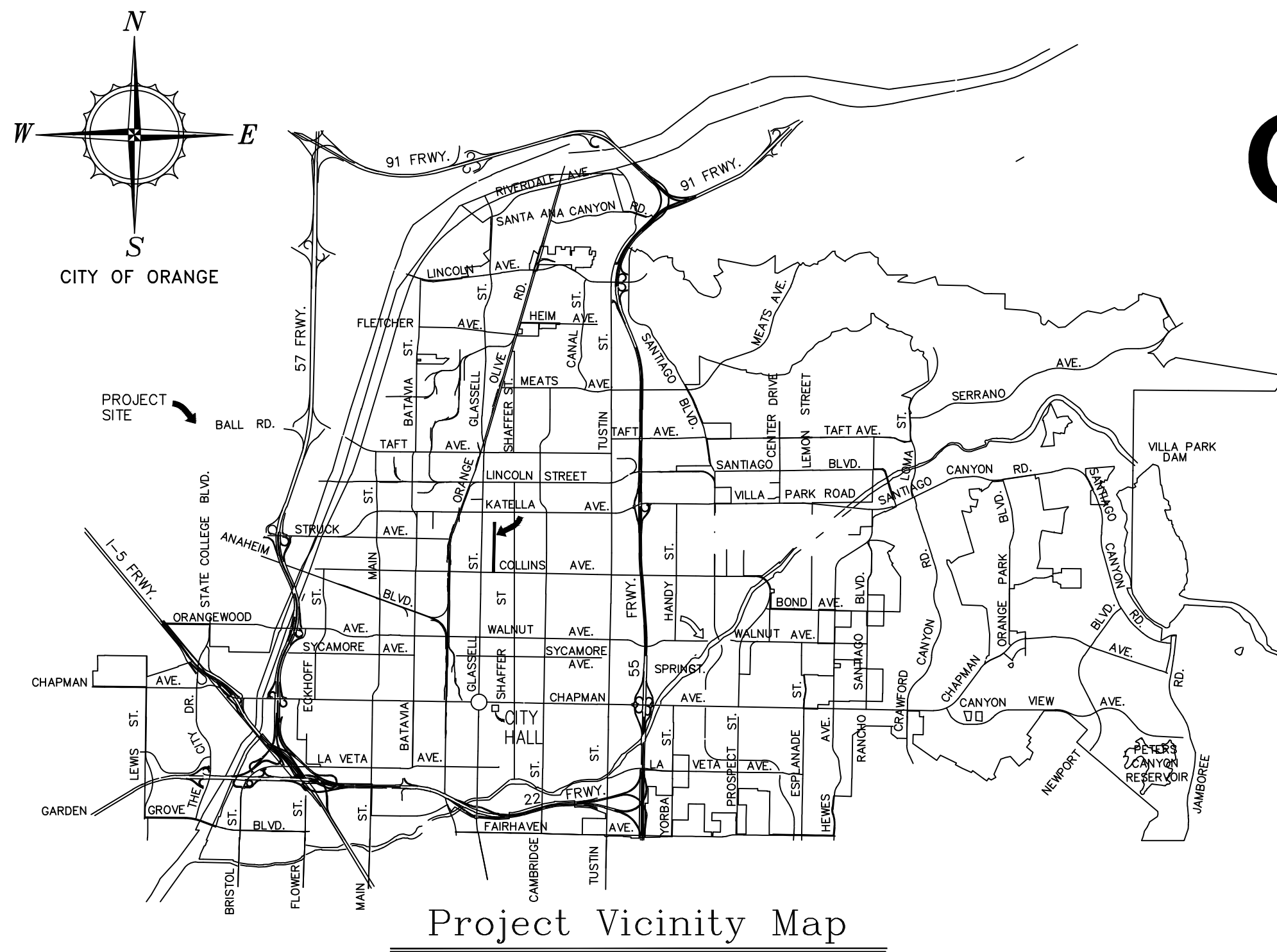
 Frank Sun, Assistant Public Works Director/
 City Engineer

 Date

PROPOSAL SCHEDULE
CDBG FY 2023-24 Grand Street Neighborhood Street Rehabilitation
(Bid No. 23-24.26; SP-4264)

ITEM NO.	QUANTITY	UNIT PRICE TO BE WRITTEN IN WORDS	UNIT PRICE	TOTAL
1	140 <u>95</u> TON	<u>Asphalt Concrete Pavement – Residential Base Course</u>		
	ADD-2	_____ dollars and _____ cents	_____	_____
2	60 <u>50</u> CY	<u>Remove Asphalt Concrete/Subgrade (Residential 2.5" to 3" Unclassified Excavation)</u>		
		_____ dollars and _____ cents	_____	_____
3	825 TON	<u>Asphalt Rubberized Hot Mix (ARHM) 2" Residential Surface Course (1/2" Class ARHM-GG-C)</u>		
		_____ dollars and _____ cents	_____	_____
4	2610 SY	<u>Cold Plane Existing Asphalt Concrete (Depth per Plan)</u>		
		_____ dollars and _____ cents	_____	_____
5	1 LS	<u>Inventory and Install Pavement Striping, Legends, Pavement Markings (Legends) and Raised Pavement Markers (RPM's) per MUTCD</u>		
		_____ dollars and _____ cents	_____	_____
6	18 EA	<u>Adjust/Remove and Replace Water Valve Box To Grade per OWD Std No. 101</u>		
		_____ dollars and _____ cents	_____	_____
7	7 EA	<u>Adjust Manhole Frame & Cover To Grade per City Std. 408</u>		
		_____ dollars and _____ cents	_____	_____
8	150 LF	<u>Furnish and Install 2" PVC Conduit</u>		
		_____ dollars and _____ cents	_____	_____

CITY OF ORANGE



COMMUNITY DEVELOPMENT BLOCK GRANT (CDBG) FY 2023-24 GRAND STREET NEIGHBORHOOD STREET REHABILITATION, SP-4264

EROSION CONTROL, SEDIMENT CONTROL, AND WATER QUALITY NOTES

- IN CASE OF EMERGENCY, CALL RUBEN HERNANDEZ AT: (714) 532-6493 DURING BUSINESS HOURS, AND (714) 538-1961 ALL OTHER TIMES.
 - A STAND-BY CREW FOR EMERGENCY WORK SHALL BE AVAILABLE AT ALL TIMES. NECESSARY MATERIALS SHALL BE AVAILABLE ON SITE AND STOCKPILED AT CONVENIENT LOCATIONS TO FACILITATE RAPID CONSTRUCTION OF TEMPORARY DEVICES WHEN RAIN IS IMMINENT.
 - THE CONTRACTOR SHALL SUBMIT PLANS FOR REVIEW BY THE CITY ENGINEER DETAILING THE PLACING OF EROSION CONTROL FACILITIES TO PROTECT AREAS SUBJECT TO STORM DAMAGE. ALL DEVICES MUST BE IN PLACE AND WORKING AT ALL TIMES. FAILURE TO PROVIDE THESE DEVICES WILL BE CAUSE TO REVOKE PERMITS OR APPROVALS BY THE CITY ENGINEER AND/OR BUILDING OFFICIAL.
 - DEVICES SHALL NOT BE MOVED OR MODIFIED WITHOUT THE APPROVAL OF THE CITY INSPECTOR.
 - EXCEPT AS OTHERWISE APPROVED BY THE CITY INSPECTOR, REMOVABLE PROTECTIVE DEVICES SHOWN SHALL BE IN PLACE AT THE END OF EACH WORKING DAY OR ON WEEKENDS WHEN THE 5 DAY RAIN PROBABILITY FORECAST EXCEEDS 40%.
 - THE PLACEMENT OF ADDITIONAL DEVICES TO REDUCE EROSION DAMAGE WITHIN THE SITE IS LEFT TO THE DISCRETION OF THE FIELD ENGINEER.
 - DESILTING BASINS MAY NOT BE REMOVED OR MADE INOPERABLE WITHOUT PRIOR APPROVAL OF THE CITY INSPECTOR.
 - EROSION CONTROL DEVICES SHALL BE MODIFIED AS NEEDED AS THE PROJECT PROGRESSES, AND PLANS OF THESE CHANGES SUBMITTED FOR APPROVAL AS REQUIRED.
 - INSURE THAT ALL EXISTING DRAINAGE COURSES AND CULVERTS ARE MAINTAINED IN WORKING CONDITION AND FREE OF SILT AND DEBRIS.
 - SEDIMENT FROM AREAS DISTURBED BY CONSTRUCTION SHALL BE RETAINED ON SITE USING STRUCTURAL CONTROLS TO THE MAXIMUM EXTENT PRACTICABLE.
 - ALL LOOSE SOIL AND DEBRIS WHICH MAY CREATE A POTENTIAL HAZARD TO OFFSITE PROPERTY SHALL BE REMOVED FROM THE SITE AS DIRECTED BY THE INSPECTOR.
 - AFTER A RAINSTORM, ALL SILT AND DEBRIS SHALL BE REMOVED FROM CHECK BERMS AND DESILTING BASINS AND BASINS PUMPED DRY.
 - STOCKPILES OF SOIL SHALL BE PROPERLY CONTAINED TO MINIMIZE SEDIMENT TRANSPORT FROM THE SITE TO STREETS, DRAINAGE FACILITIES OR ADJACENT PROPERTIES VIA RUNOFF, VEHICLE TRACKING, OR WIND.
 - APPROPRIATE BMPs FOR CONSTRUCTION-RELATED MATERIALS, WASTES, SPILLS OR RESIDUES SHALL BE IMPLEMENTED TO MINIMIZE TRANSPORT FROM THE SITE TO STREETS, DRAINAGE FACILITIES, OR ADJOINING PROPERTY BY WIND OR RUNOFF.
 - RUNOFF FROM EQUIPMENT AND VEHICLE WASHING SHALL BE CONTAINED AT CONSTRUCTION SITES UNLESS TREATED TO REMOVE SEDIMENT AND OTHER POLLUTANTS.
 - ALL CONSTRUCTION CONTRACTOR AND SUBCONTRACTOR PERSONNEL ARE TO BE MADE AWARE OF THE REQUIRED BEST MANAGEMENT PRACTICES AND GOOD HOUSEKEEPING MEASURES FOR THE PROJECT SITE AND ANY ASSOCIATED CONSTRUCTION STAGING AREAS.
 - AT THE END OF EACH DAY OF CONSTRUCTION ACTIVITY ALL CONSTRUCTION DEBRIS AND WASTE MATERIALS SHALL BE COLLECTED AND PROPERLY DISPOSED IN TRASH OR RECYCLE BINS.
 - FILL SLOPES AT THE SITE PERIMETER MUST DRAIN AWAY FROM THE TOP OF SLOPE AT THE CONCLUSION OF EACH WORKING DAY.
 - A GUARD SHALL BE POSTED ON THE SITE WHENEVER THE DEPTH OF WATER IN ANY DEVICE EXCEEDS TWO (2) FEET.
 - CONSTRUCTION SITES SHALL BE MAINTAINED IN SUCH A CONDITION THAT AN ANTICIPATED STORM DOES NOT CARRY WASTES OR POLLUTANTS OFF THE SITE. DISCHARGES OF MATERIAL OTHER THAN STORMWATER ARE ALLOWED ONLY WHEN NECESSARY FOR PERFORMANCE AND COMPLETION OF CONSTRUCTION PRACTICES AND WHERE THEY DO NOT CAUSE OR CONTRIBUTE TO A VIOLATION OF ANY WATER QUALITY STANDARD; CAUSE OR THREATEN TO CAUSE POLLUTION, CONTAMINATION OR NUISANCE; OR CONTAIN A HAZARDOUS SUBSTANCE IN A QUANTITY REPORTABLE UNDER FEDERAL REGULATIONS 40 CFR PARTS 117 AND 302.
- POTENTIAL POLLUTANTS INCLUDE BUT ARE NOT LIMITED TO: SOLID OR LIQUID CHEMICAL SPILLS; WASTES FROM PAINTS, STAINS, SEALANTS, GLUES, LIME, PESTICIDES, HERBICIDES, WOOD PRESERVATIVES AND SOLVENTS, ASBESTOS FIBERS, PAINT FLAKES OR STUCCO FRAGMENTS; FUELS, OILS, LUBRICANTS, AND HYDRAULIC, RADIATOR OR BATTERY FLUIDS; CONCRETE, DETERGENT OR FLOATABLE WASTES; WASTES FROM ANY ENGINE/EQUIPMENT STEAM CLEANING OR CHEMICAL DEGREASING; AND SUPERCHLORINATED POTABLE WATER LINE FLUSHINGS.
- DURING CONSTRUCTION, DISPOSAL OF SUCH MATERIALS SHOULD OCCUR IN A SPECIFIED AND CONTROLLED TEMPORARY AREA ON-SITE PHYSICALLY SEPARATED FROM POTENTIAL STORMWATER RUNOFF, WITH ULTIMATE DISPOSAL IN ACCORDANCE WITH LOCAL, STATE AND FEDERAL REQUIREMENTS.
 - DEWATERING OF CONTAMINATED GROUNDWATER, OR DISCHARGING CONTAMINATED SOILS VIA SURFACE EROSION IS PROHIBITED. DEWATERING OF NON-CONTAMINATED GROUNDWATER REQUIRES A NATIONAL POLLUTANT DISCHARGE ELIMINATION SYSTEM (NPDES) PERMIT FROM THE RESPECTIVE STATE REGIONAL WATER QUALITY CONTROL BOARD.
 - TAKE NECESSARY PRECAUTIONS TO INSURE THAT ADJACENT PROPERTY NOT SUFFER DAMAGE DUE TO DEBRIS, MUD, OR INUNDATION CAUSED BY GRADING ACTIVITIES WITHIN PERMITTED AREA.
 - PLACE EROSION PROTECTION AROUND ALL OUTLETS OF DOWNDRAINS THAT ARE NOT FULLY CONNECTED TO THE ULTIMATE DRAINAGE DEVICE.
 - PLACE EROSION PROTECTION AROUND ALL ULTIMATE INLETS WHILE THE POSSIBILITY OF SILTATION EXISTS PRIOR TO ULTIMATE SLOPE PLANTING BECOMING EFFECTIVE.
 - RESTORE ALL VEGETATION AND PLANTING ON THE EXISTING SLOPE TO ORIGINAL CONDITION.

SHEET INDEX

- TITLE SHEET
- GRAND STREET, COLLINS AVENUE TO QUINCY AVE
- GRAND STREET, QUINCY AVE TO WILSON AVE

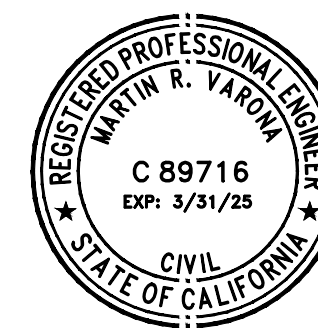
GENERAL NOTES

- ALL WORK SHALL CONFORM TO THE LATEST EDITION OF THE CITY OF ORANGE STANDARD PLANS AND SPECIFICATIONS, AND THE STANDARD SPECIFICATIONS FOR PUBLIC WORKS CONSTRUCTION. (GREEN BOOK)
- PUBLIC AND PRIVATE UTILITIES AND THE ACCOMPANYING SUBSTRUCTURES SHOWN ON THESE PLANS ARE FROM AVAILABLE PUBLIC DATA. THE CONTRACTOR SHALL BE RESPONSIBLE FOR LOCATING AND PROTECTING ALL UTILITIES AND SUBSTRUCTURES WITHIN THE CONSTRUCTION LIMITS. DAMAGE TO SUCH RESULTING FROM CONSTRUCTION OPERATIONS SHALL BE THE CONTRACTOR'S RESPONSIBILITY.
- ALL UNDERGROUND UTILITY AND OTHER SUBSURFACE WORK SHALL BE COMPLETED PRIOR TO COMPLETING THE FINAL SURFACING OR LANDSCAPING. SEWER LATERALS TO BE INSTALLED PRIOR TO CURB AND GUTTER.
- THE CONTRACTOR SHALL NOTIFY THE FOLLOWING UTILITIES REGARDING ANY PROBLEMS.

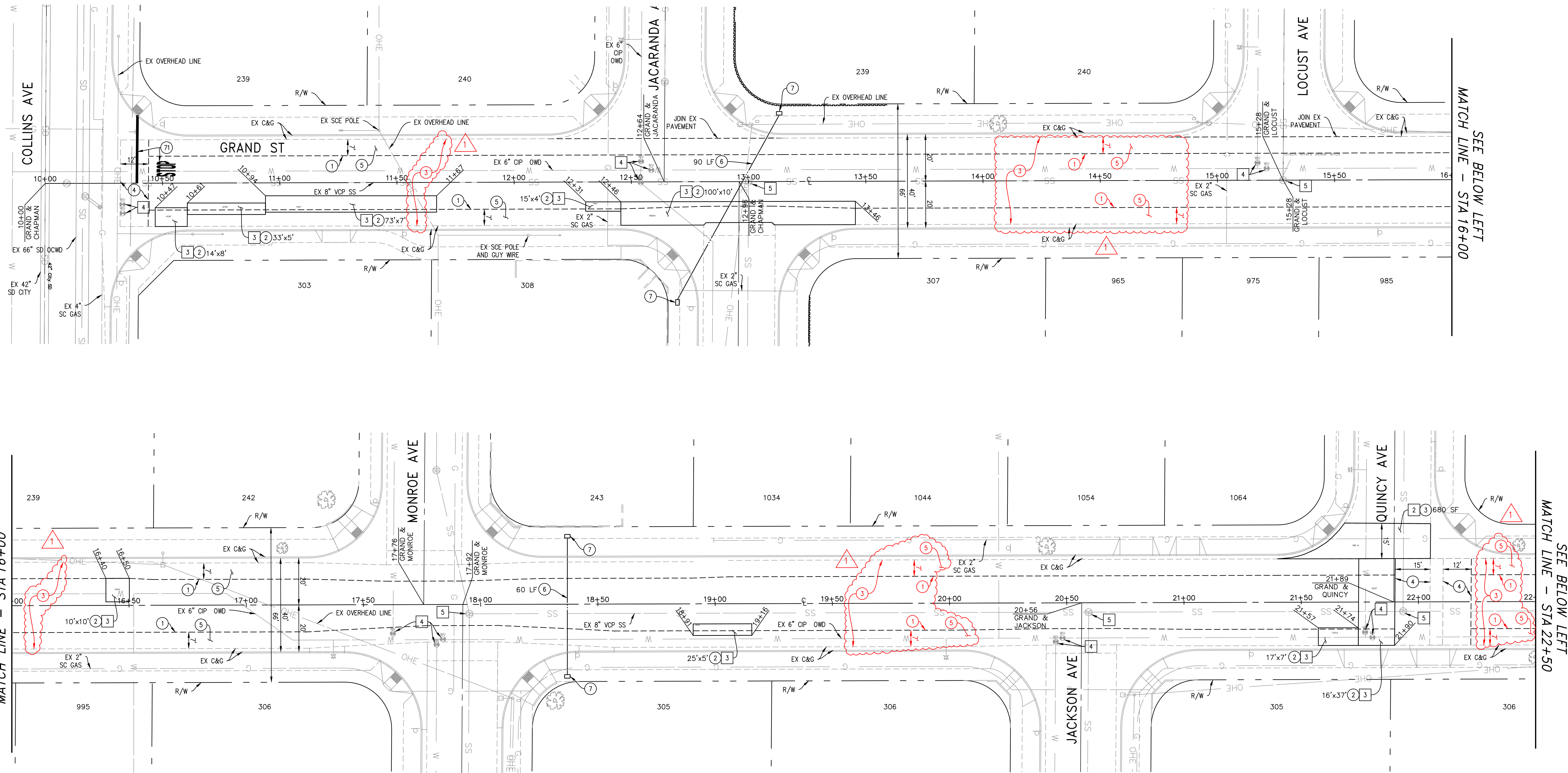
MICAH JEAN	CITY OF ORANGE STREET TREES	714-532-6470
JIMMY ROCHA	CITY OF ORANGE TRAFFIC DIVISION	714-532-6426
SON TRAN	CITY OF ORANGE WATER DIVISION	714-288-2497
NATHAN BLUMHM	CITY OF ORANGE LANDSCAPE DIVISION	714-532-6464
RICHARD RANSOM	AT&T	714-618-9154
MIGUEL QUILIVIX-FRANCO	CHARTER COMMUNICATIONS	714-329-0366
DANIEL BOYADJIAN	SOUTHERN CALIFORNIA EDISON	626-664-5148
ANTHONY CHAVEZ	SOUTHERN CALIFORNIA GAS - DISTRIBUTION	213-231-0898
- FOR INSPECTION, CONTACT CITY OF ORANGE PUBLIC WORKS, 714-744-5526, FORTY-EIGHT (48) HOURS PRIOR TO THE REQUIRED DATE.
- THE CONTRACTOR SHALL NOTIFY CITY OF ORANGE PUBLIC WORKS MAINTENANCE DIVISION, 714-532-5480, SEVENTY-TWO HOURS PRIOR TO ANY ROAD CLOSURE AND/OR DETOUR.
- CONTRACTOR SHALL NOTIFY UNDERGROUND SERVICE ALERT (DIAL 811 OR 1-800-227-2600) FORTY-EIGHT HOURS PRIOR TO THE REQUIRED DATE.
- ALL PIPELINES AND SUBSTRUCTURES ARE TO BE CONSTRUCTED BEGINNING FROM THE DOWNSTREAM END. VERIFY DOWNSTREAM POINTS OF CONNECTION (HORIZONTAL AND VERTICAL LOCATIONS) PRIOR TO CONSTRUCTION AND REPORT ANY DISCREPANCIES TO THE CITY OF ORANGE.
- CONSTRUCTION SURVEY WORK FOR THE LINES AND GRADES FOR CONSTRUCTION OF THIS PROJECT SHALL BE THE RESPONSIBILITY OF THE CONTRACTOR.
- CONTRACTOR SHALL PRESERVE ALL PERMANENT SURVEY MARKERS INCLUDING ALL CENTERLINE TIES AS SPECIFIED IN SECTION 2-9.1 OF THE CITY OF ORANGE STANDARD PLANS AND SPECIFICATIONS.
- THE CONTRACTOR SHALL PROTECT FROM DAMAGE ALL UTILITY LINES AND SUBSTRUCTURES.
- NO DRIVEWAY OPENINGS TO BE CONSTRUCTED WITHIN THREE FEET OF A FIRE HYDRANT OR CURB RETURN.
- ALL STREET CONSTRUCTION SHOWN IS BASED ON STREET CENTERLINE STATIONS AND ELEVATIONS.
- AT THE COMPLETION OF THE CONSTRUCTION, SUBMIT TO THE CITY CONSTRUCTION INSPECTOR A COMPLETE SET OF VIDEO INSPECTION OF THE SEWER SYSTEM AND THE STORM DRAIN SYSTEM. THE VIDEO INSPECTION SHALL BE FOR THE ENTIRE LENGTH OF THE SYSTEM. LOCATION AND STATIONING INFORMATION SHALL BE INCLUDED IN THE VIDEO RECORDING.
- THE CONTRACTOR SHALL PROVIDE, FOR REVIEW AND APPROVAL OF THE CITY, TRAFFIC CONTROL PLANS PER THE LATEST EDITIONS OF THE CALIFORNIA MANUAL ON UNIFORM TRAFFIC CONTROL DEVICES (CA MUTCD), AND WORK AREA TRAFFIC CONTROL HANDBOOK (WATCH) PREPARED BY A LICENSE TRAFFIC ENGINEER.

ENGINEER'S NOTES TO CONTRACTORS

- ALL EXISTING SURFACE AND UNDERGROUND IMPROVEMENTS SHALL BE PROTECTED IN PLACE UNLESS SPECIFIED OTHERWISE. ANY DAMAGES SHALL BE THE SOLE RESPONSIBILITY OF THE CONTRACTOR TO REMOVE AND REPLACE AT THE RESPECTIVE AGENCY STANDARD AND SPECIFICATIONS. NO ADDITIONAL COMPENSATION WILL BE ALLOWED.
- THE CONTRACTOR SHALL POT-HOLE AND VERIFY LOCATIONS AND ELEVATIONS OF EXISTING UTILITIES PRIOR TO START OF ANY CONSTRUCTION ACTIVITIES. ANY DISCREPANCY SHALL BE REPORTED TO THE OWNER /OR THE ENGINEER.
- THE CONTRACTOR SHALL VERIFY ALL LOCATIONS AND ELEVATIONS OF EXISTING SEWER MAIN, LATERALS AND MANHOLES PRIOR TO THE START OF ANY CONSTRUCTION ACTIVITIES ANY DISCREPANCY SHALL BE REPORTED TO THE OWNER /OR THE ENGINEER.
- CONTRACTOR SHALL PROVIDE GRADES AS REQUIRED PER STANDARD. REMOVAL LIMITS SHALL BE COORDINATED WITH ENGINEER PRIOR TO REMOVAL.
- PAVEMENT LIMIT REMOVALS SHALL BE COORDINATE WITH ENGINEER PRIOR TO CONSTRUCTION.
- CONTRACTOR SHALL SCHEDULE A JOB WALK PRIOR TO DEMOLITION WITH THE CITY ENGINEER AND THE SR. LANDSCAPE PROJECT COORDINATOR (714-532-6464).



UNDER THE SUPERVISION OF: 1/11/2024 DATE		FOR ENGINEER'S USE		CITY OF ORANGE OFFICE OF THE CITY ENGINEER CDBG FY 2023-24 GRAND STREET NEIGHBORHOOD STREET REHABILITATION TITLE SHEET	
		DRAWN M.YARONA 12/1/23 DESIGNED M.YARONA 12/1/23 CHECKED Y.NAKAGAWA 12/5/23	NAME DATE		
REVISIONS		FOR CITY USE ONLY		APPROVED: <i>[Signature]</i> 01/11/2024 DATE ASSISTANT PUBLIC WORKS DIRECTOR/CITY ENGINEER	
DATE	DESCRIPTION	REV. BY	STREETS	SCALE: HORIZ. AS NOTED VERT. AS NOTED	APPROVED: <i>[Signature]</i> DATE PUBLIC WORKS DIRECTOR
1-24-2024	ADDENDUM 2: VARIOUS REVISIONS	MV	SEWER	F.B. _____ PG. _____ SHEET 1 OF 3 SHEETS	
			DRAINAGE		
			WATER		
			ST. SUPT.		
			TRAFFIC		



CONSTRUCTION NOTES

- ① EDGE GRIND LIMIT LINE.
- ② CONSTRUCT ASPHALT CONCRETE REPAIR PER LOCATION SHOWN ON PLAN. CONSTRUCT 2" - 3" ASPHALT CONCRETE BASE COURSE OVER COMPACTED EXISTING BASE UNLESS OTHERWISE SHOWN ON PLANS.
- ③ CONSTRUCT 2" MIN. THICKNESS ASPHALT RUBBER HOT MIX (ARHM) SURFACE COURSE.
- ④ CONSTRUCT ASPHALT CONCRETE PAVEMENT TRANSITION PER CROSS GUTTER TRANSITION DETAIL 3 ② ON SHEET 3.
- ⑤ COLD PLANE ASPHALT PAVEMENT VARIABLE DEPTH PER EDGE GRIND DETAIL 2 ① ON SHEET 3.
- ⑥ FURNISH AND INSTALL 2" PVC CONDUIT AT 30" MINIMUM DEPTH OF COVER WITH 3-#8 CONDUCTORS (AWS BLACK, AWS RED, GREEN-BOND) PER DETAIL 3 ON SHEET 3.
- ⑦ FURNISH AND INSTALL NO. 3 1/2 PULL BOX WITH LOCK DOWN "STREET LIGHT" LID.

① ADDENDUM 2: VARIOUS REVISIONS, INCLUDING REMOVING CONDUCTORS FROM PROJECT SCOPE

DISPOSITION NOTES

- ① PROTECT IN PLACE.
- ② 2" MIN. COLD PLANE ASPHALT CONCRETE PAVEMENT
- ③ REMOVE EXISTING ASPHALT CONCRETE SECTION.
- ④ REPLACE AND ADJUST WATER VALVE BOX TO FINISHED SURFACE PER CITY OF ORANGE WATER STD OWD-101.
- ⑤ ADJUST EXISTING SEWER MANHOLE TO GRADE PER CITY OF ORANGE STD 408.

SIGNING AND STRIPING NOTE

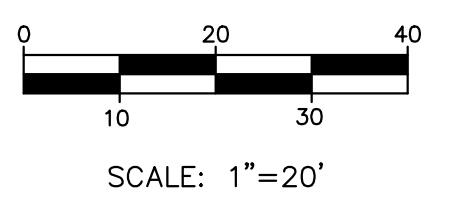
- ⑦ RESTORE SIGNING, MARKING AND SYMBOLS AS SHOWN ON PLAN TO MATCH EXISTING PER CALTRANS STD PLAN A420 AND F AND CAMUTCD.

ADDITIONAL NOTES

- 1. THE LOCATIONS OF ASPHALT CONCRETE AREAS AS SHOWN ON PLANS ARE APPROXIMATE ONLY. THE EXACT LOCATIONS WILL BE DETERMINED IN THE FIELD WITH THE ENGINEER OR INSPECTOR.
- 2. EXISTING PAVEMENT SECTION ON GRAND ST FROM COLLINS AVE TO MONROE AVE IS 3" AC OVER 6" UNTREATED ROCK BASE. EXISTING PAVEMENT SECTION ON GRAND ST FROM MONROE AVE TO WILSON AVE IS 2.5" AC OVER 6" UNTREATED ROCK BASE.
- 3. CONDUIT LAYOUT SHOWN IS SCHEMATIC. CONTRACTOR WILL BE RESPONSIBLE FOR REPAIRING/RESTORING ANY/ALL EXISTING IMPROVEMENTS DAMAGED BY THE STREETLIGHT WORK. TRENCH REPAIR PER CITY OF ORANGE STD. 125 WITH FULL-DEPTH AC OVER COMPACTED BACKFILL PER SPECIFICATIONS.

ABBREVIATIONS

AC = ASPHALT CONCRETE
 ARHM = ASPHALT RUBBER HOT MIX
 C&G = CURB AND GUTTER
 CIP = CAST IRON PIPE
 CL = CENTER LINE
 ES = EXISTING SURFACE
 EX = EXISTING
 FS = FINISHED SURFACE
 G = GAS
 LF = LINEAR FEET
 MIN = MINIMUM
 OHE = OVERHEAD ELECTRICITY
 OWD = ORANGE WATER DEPARTMENT
 R/W = RIGHT OF WAY
 SC GAS = SO CAL GAS
 SF = SQUARE FEET
 SS = SANITARY SEWER
 STD = STANDARD
 VCP = VITRIFIED CLAY PIPE
 W = WATER
 WV = WATER VALVE

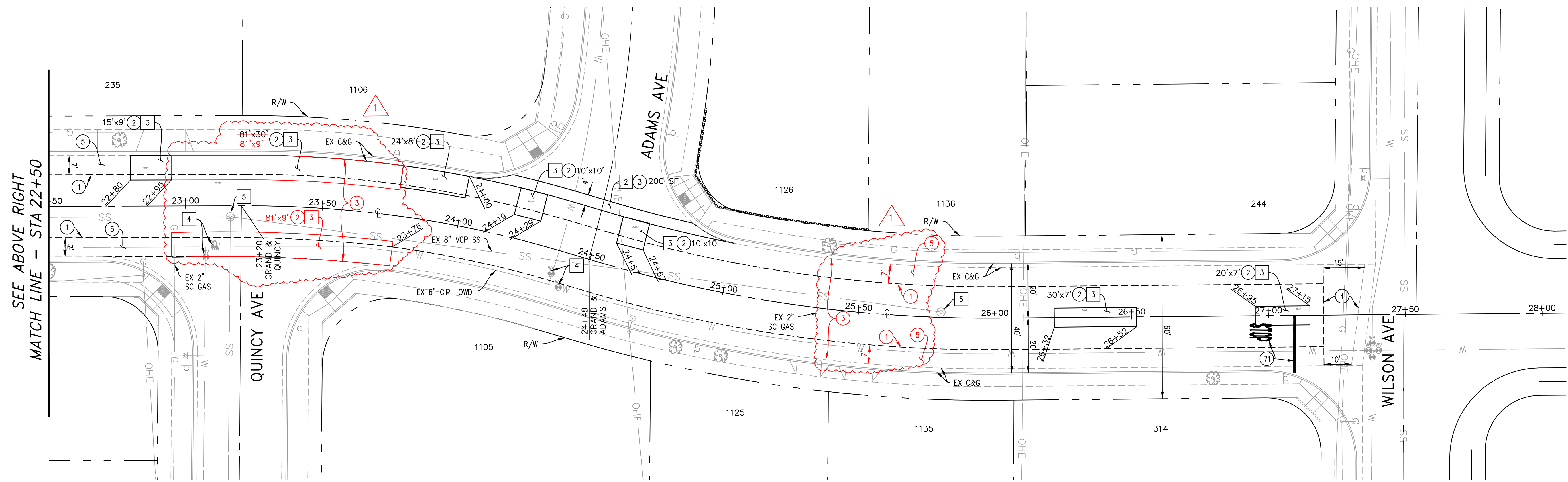


CITY OF ORANGE
 OFFICE OF THE CITY ENGINEER
IMPROVEMENTS PLAN
 CDBG FY 23-24 GRAND STREET NEIGHBORHOOD STREET REHABILITATION
 GRAND ST: COLLINS AVE TO QUINCY AVE
 STA 10+00 TO STA 22+50

APPROVED:	APPROVED:
DATE: ASSISTANT PUBLIC WORKS DIRECTOR/CITY ENGINEER	DATE: PUBLIC WORKS DIRECTOR

DRAWN	M.VARONA	DATE	12/1/23
DESIGNED	M.VARONA	DATE	12/1/23
CHECKED	Y.NAKAGAWA	DATE	12/5/23

N:\Public Works\ENGINEERING\Design\Projects\SP-4264_CDBG_Street Rehab Grand FY23-24\01_Engineering\Drawings\Sheets\SP-4264_Grand_Sheets.dwg
 By: Martin Varona on 12/4/2024 9:55 AM

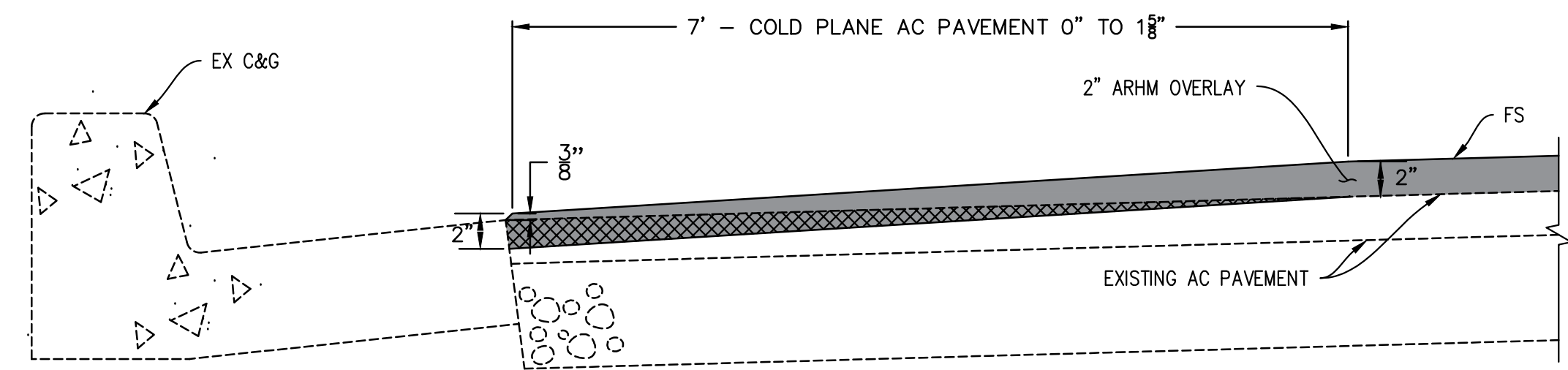


SEE ABOVE RIGHT
MATCH LINE - STA 22+50

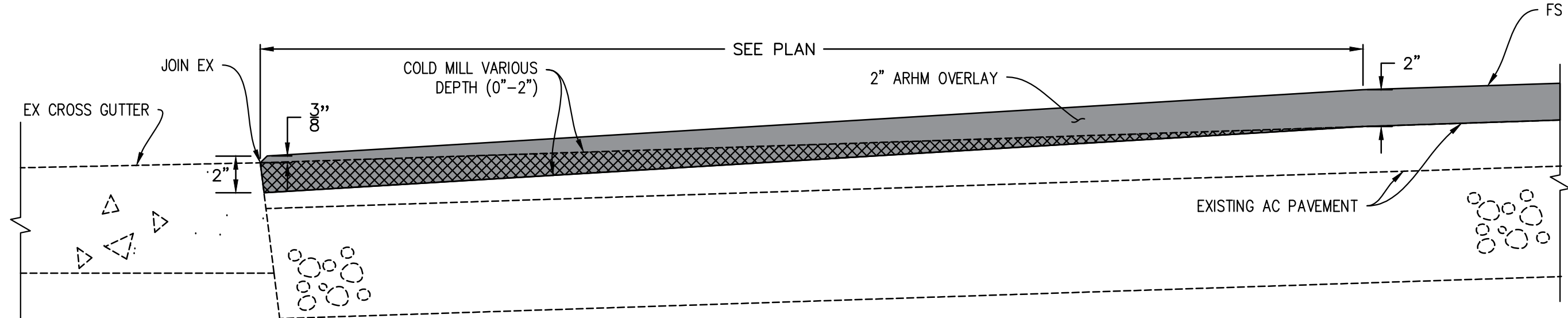
QUINCY AVE

ADAMS AVE

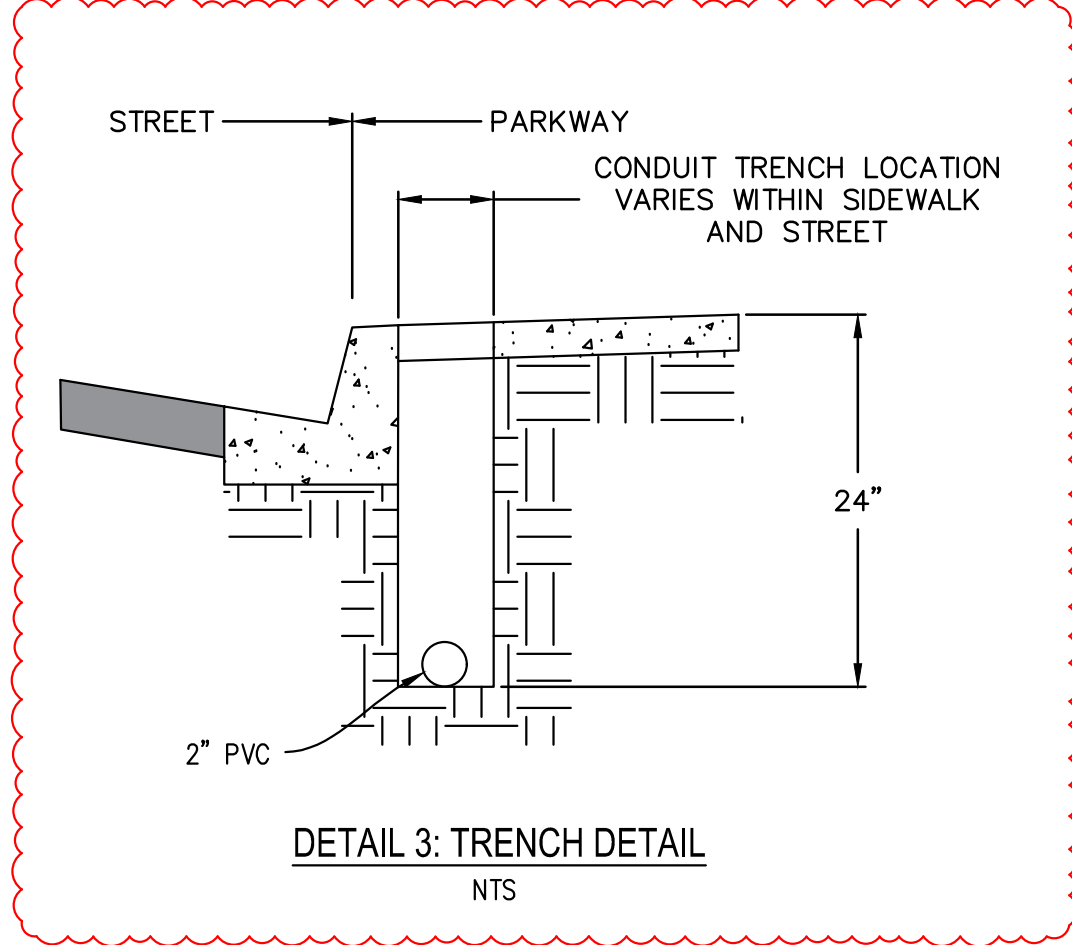
WILSON AVE



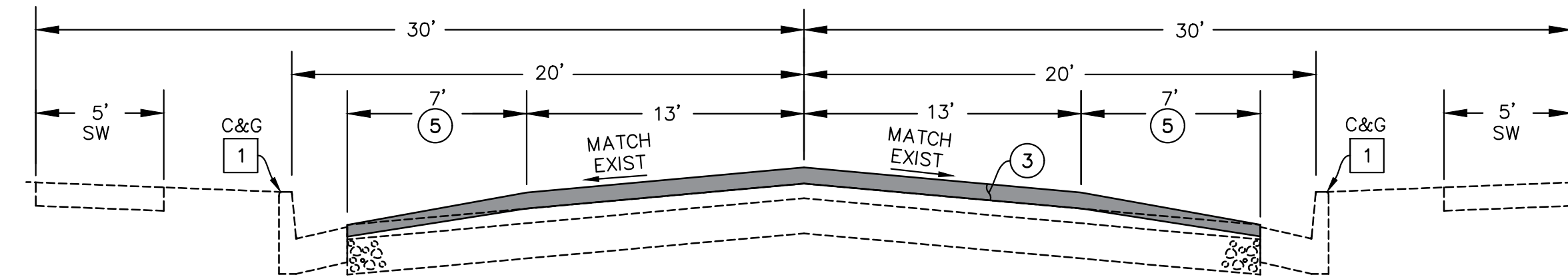
DETAIL 1: GUTTER EDGE GRIND DETAIL
NTS



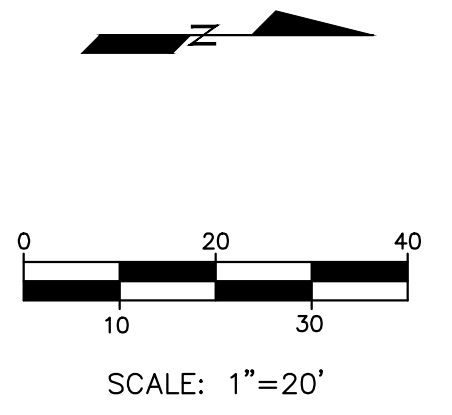
DETAIL 2: PAVEMENT TRANSITION AT CROSS GUTTER
NTS



DETAIL 3: TRENCH DETAIL
NTS



TYPICAL SECTION - GRAND STREET



CONSTRUCTION NOTES

- 1 EDGE GRIND LIMIT LINE.
- 2 CONSTRUCT ASPHALT CONCRETE REPAIR PER LOCATION SHOWN ON PLAN. CONSTRUCT 2 1/2" - 3" ASPHALT CONCRETE BASE COURSE OVER COMPACTED EXISTING BASE UNLESS OTHERWISE SHOWN ON PLANS.
- 3 CONSTRUCT 2" MIN. THICKNESS ASPHALT RUBBER HOT MIX (ARHM) SURFACE COURSE.
- 4 CONSTRUCT ASPHALT CONCRETE PAVEMENT TRANSITION PER CROSS GUTTER TRANSITION DETAIL 2 ON SHEET 3.
- 5 COLD PLANE ASPHALT CONCRETE PAVEMENT VARIABLE DEPTH PER EDGE GRIND DETAIL 1 ON SHEET 3.

DISPOSITION NOTES

- 1 PROTECT IN PLACE.
- 2 2" MIN. COLD PLANE ASPHALT CONCRETE PAVEMENT
- 3 REMOVE EXISTING ASPHALT CONCRETE SECTION.
- 4 REPLACE AND ADJUST WATER VALVE BOX TO FINISHED SURFACE PER CITY OF ORANGE WATER STD 0WD-101.
- 5 ADJUST EXISTING SEWER MANHOLE TO GRADE PER CITY OF ORANGE STD 408.

SIGNING AND STRIPING NOTE

- 7 RESTORE SIGNING, MARKING AND SYMBOLS AS SHOWN ON PLAN TO MATCH EXISTING PER CALTRANS STD PLAN A42D AND F AND CAMUTCD.

ADDITIONAL NOTES

1. THE LOCATIONS OF ASPHALT CONCRETE AREAS AS SHOWN ON PLANS ARE APPROXIMATE ONLY. THE EXACT LOCATIONS WILL BE DETERMINED IN THE FIELD WITH THE ENGINEER OR INSPECTOR.
2. EXISTING PAVEMENT SECTION ON GRAND ST FROM COLLINS AVE TO MONROE AVE IS 3" AC OVER 6" UNTREATED ROCK BASE. EXISTING PAVEMENT SECTION ON GRAND ST FROM MONROE AVE TO WILSON AVE IS 2.5" AC OVER 6" UNTREATED ROCK BASE.
3. CONDUIT LAYOUT SHOWN IS SCHEMATIC. CONTRACTOR WILL BE RESPONSIBLE FOR REPAIRING/RESTORING ANY/ALL EXISTING IMPROVEMENTS DAMAGED BY THE STREETLIGHT WORK. TRENCH REPAIR PER CITY OF ORANGE STD. 125 WITH FULL-DEPTH AC OVER COMPACTED BACKFILL PER SPECIFICATIONS.

ABBREVIATIONS

- AC = ASPHALT CONCRETE
- ARHM = ASPHALT RUBBER HOT MIX
- C&G = CURB AND GUTTER
- CIP = CAST IRON PIPE
- CL = CENTER LINE
- ES = EXISTING SURFACE
- EX = EXISTING
- FS = FINISHED SURFACE
- G = GAS
- LF = LINEAR FEET
- MIN = MINIMUM
- OHE = OVERHEAD ELECTRICITY
- OWD = ORANGE WATER DEPARTMENT
- R/W = RIGHT OF WAY
- SC GAS = SO CAL GAS
- SF = SQUARE FEET
- SS = SANITARY SEWER
- STD = STANDARD
- VCP = VITRIFIED CLAY PIPE
- W = WATER
- WV = WATER VALVE

1 ADDENDUM 2: VARIOUS REVISIONS



CITY OF ORANGE			
OFFICE OF THE CITY ENGINEER			
IMPROVEMENTS PLAN			
CDBG FY 23-24 GRAND STREET NEIGHBORHOOD STREET REHABILITATION			
GRAND ST: QUINCY AVE TO WILSON AVE STA 22+50 TO STA 27+50			
APPROVED:		APPROVED:	
DATE: ASSISTANT PUBLIC WORKS DIRECTOR/CITY ENGINEER		DATE: PUBLIC WORKS DIRECTOR	
SCALE: HORIZ. AS NOTED VERT. AS NOTED	F.B. _____	PG. _____	SHEET 3 OF 3 SHEETS
DRAWN: M.VARONA	NAME: M.VARONA	DATE: 12/1/23	
DESIGNED: M.VARONA	NAME: M.VARONA	DATE: 12/1/23	
CHECKED: Y.NAKAGAWA	NAME: Y.NAKAGAWA	DATE: 12/5/23	
			SP-4264

N:\Public Works\Engineering\Design\Projects\SP-4264_CDBG_Street Rehab_Grand
 FY23-24\01_Engineering\Drawings\Sheets\SP-4264_Grand_Sheets.dwg
 By: Martin Varona on 12/4/2024 9:55 AM